

# **ASBP Timber Reuse Webinar**

**Charlie Law**

Sustainability Director – Timber Development UK

# Traditional UK Construction Industry Model



Take



Make

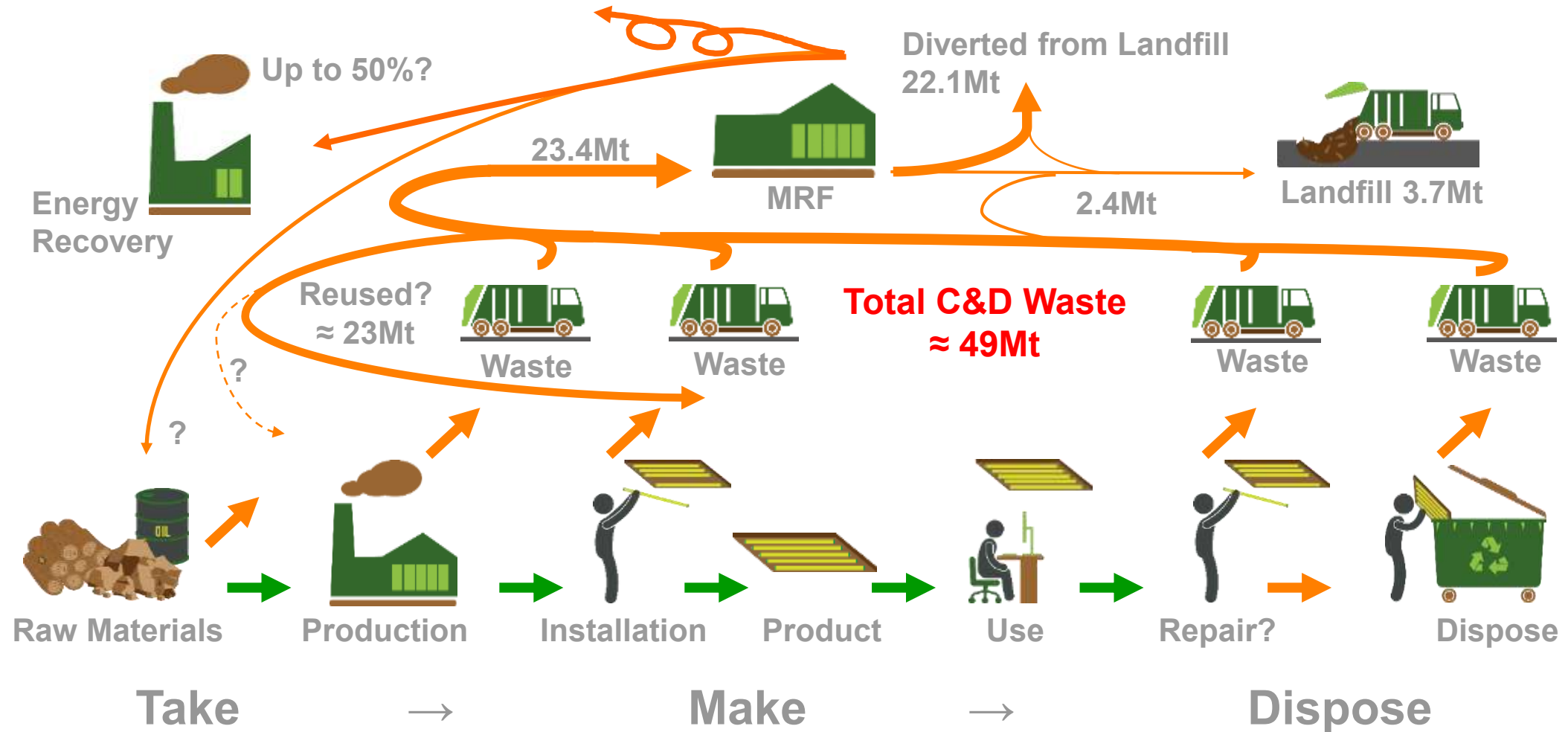


Dispose

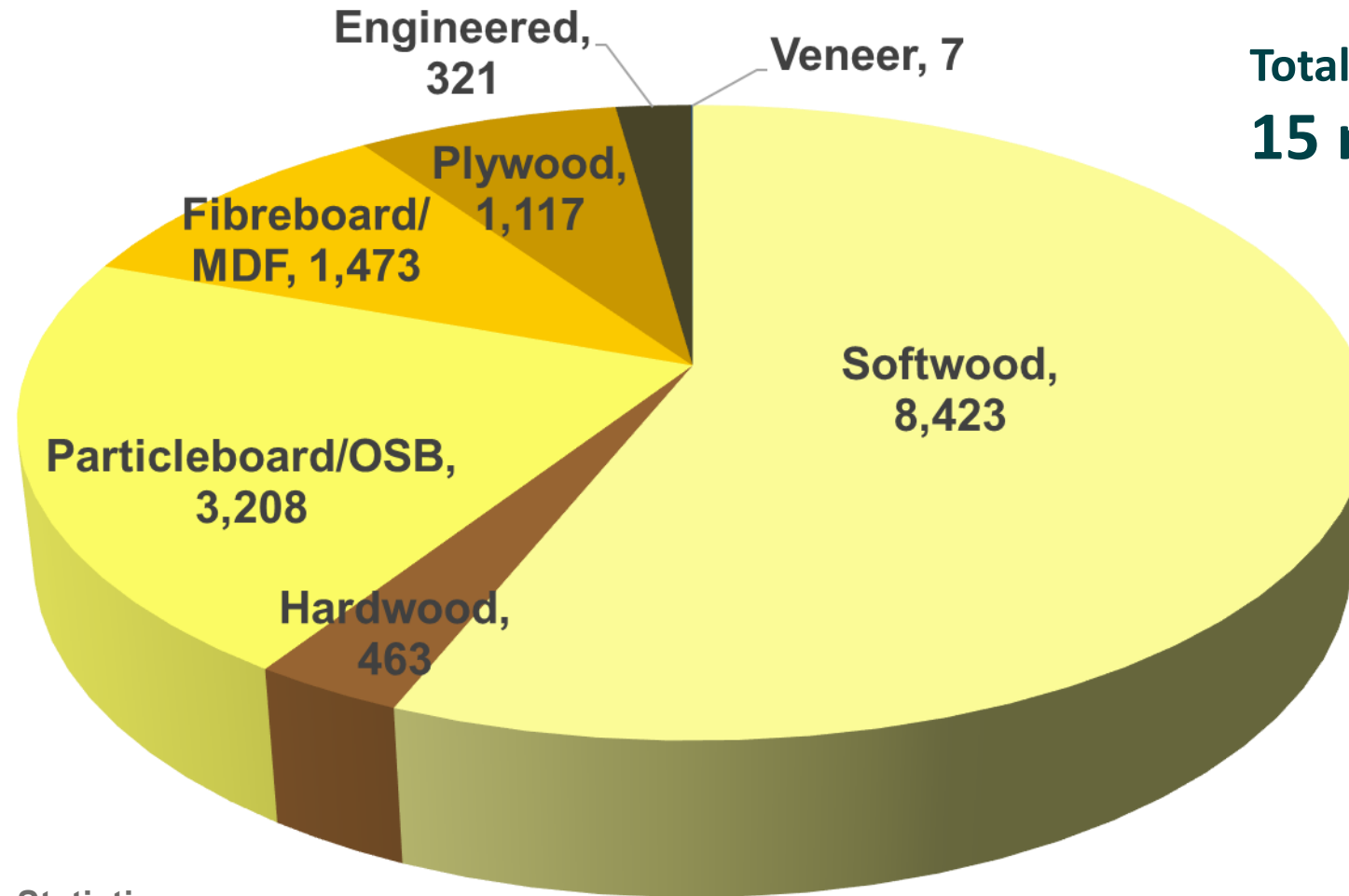
# Construction Industry C&D Waste Flows (2014)



**TIMBER  
DEVELOPMENT  
UK**



# 2023 UK Timber Consumption (Thousand m3)\*

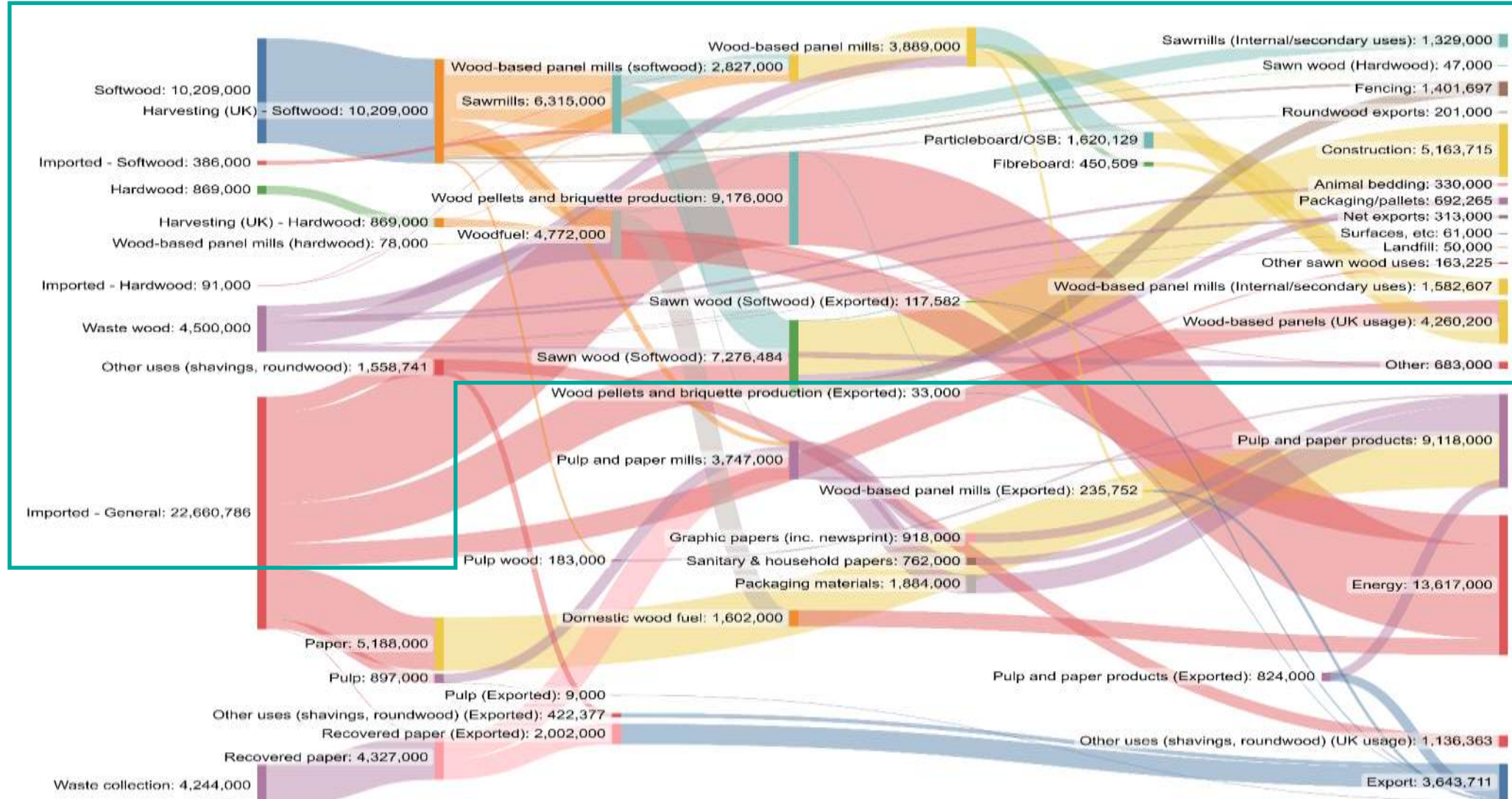


Total UK Consumption:  
**15 million m<sup>3</sup>**

\*2024 Forestry Commission Statistics  
Report & TDUK Import Data



# Industry Material Flows



Timber Industry Net Zero Roadmap Figure 11. Resource balance of the UK Timber Industry in tonnes (2019)

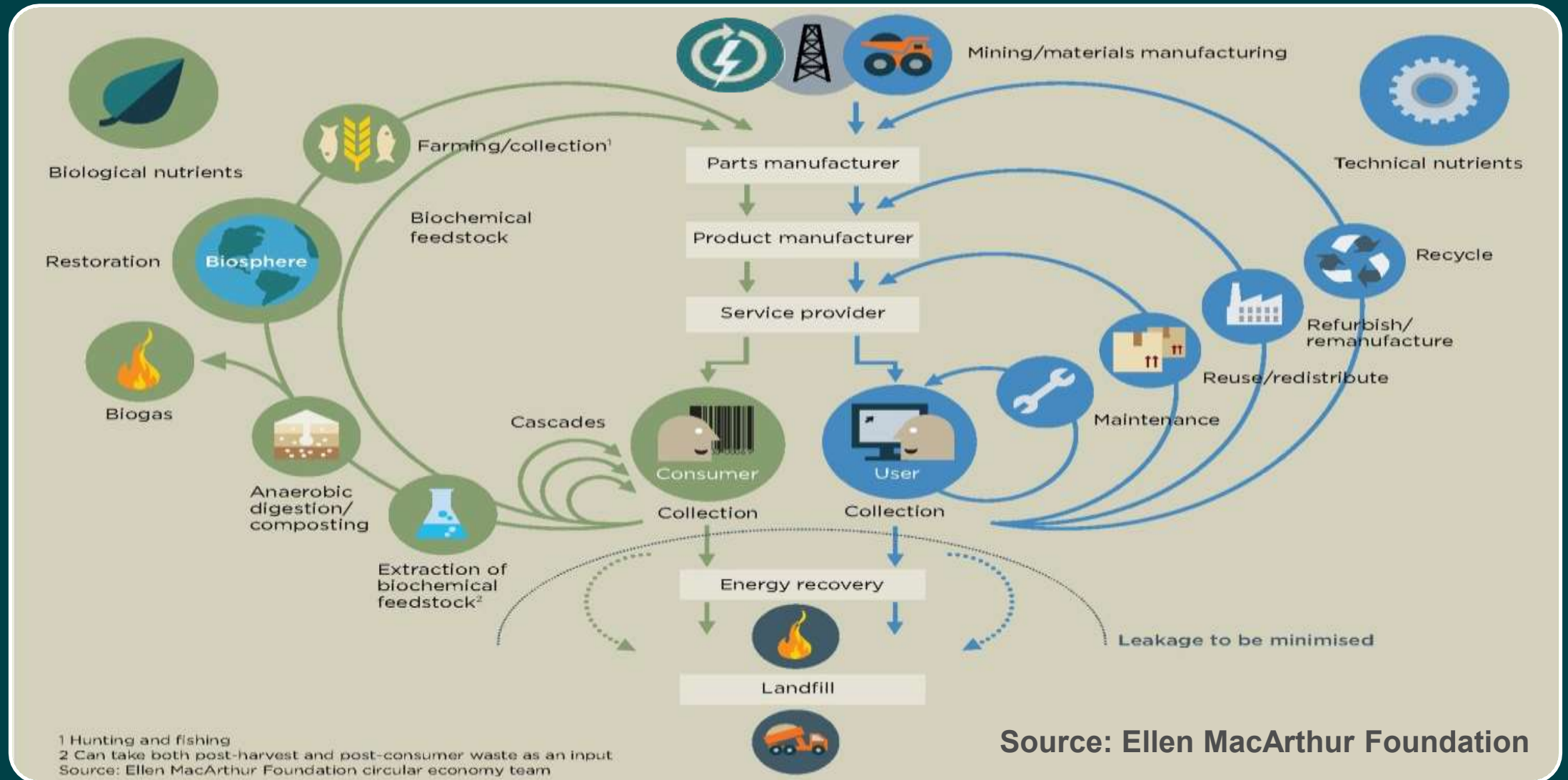
# End of Life Timber Flows



Adapted from CEI Bois –  
Tackle Climate Change 2009



# Ellen MacArthur Foundation



Source: Ellen MacArthur Foundation

# ABBA Arena, UK



Photo: © Dirk Lindner



# Roundhouse, UK



**TIMBER  
DEVELOPMENT  
UK**

**REED  
WATTS**



Photo: © Fred Howarth

# Old Gramophone Works, UK



Photo: © Dirk Lindner



# Pallet LOOP, UK

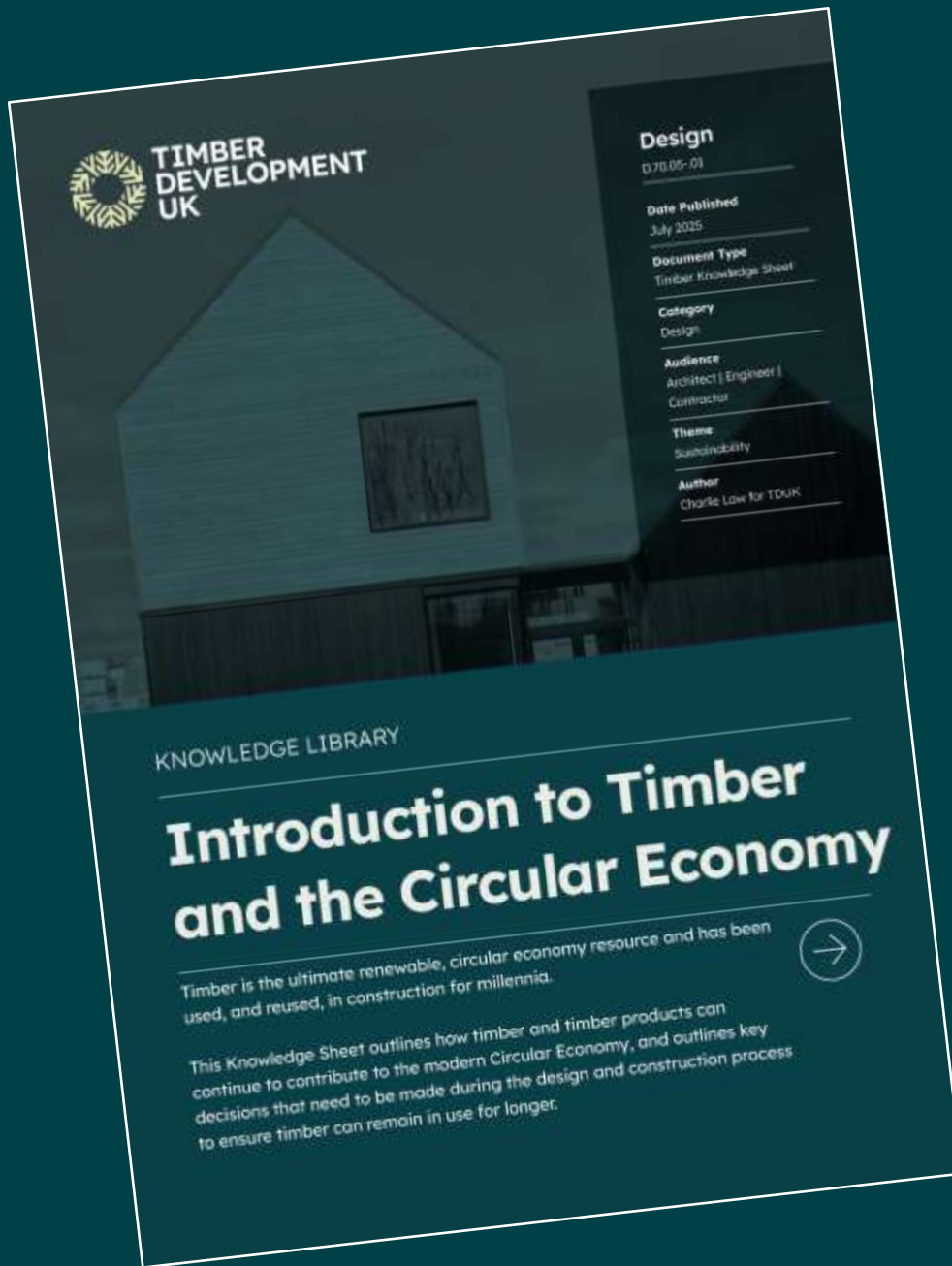


Photo: © British Gypsum



## Current Challenges

- Reluctance of industry to adopt new ways of working (e.g. manufactures not using Pallet LOOP or setting up Take Back schemes)
- Designers not designing for reuse
- Incorrect detailing/installation of timber components reducing service life
- Metal removal from existing timbers (e.g. nails, screws, connectors, etc.)
- No standard for the structural grading of reused timbers



# New TDUK Publication

## Introduction to Timber and the Circular Economy

# Call to Action



- Start to consider circular economy as part of business as usual
- Look to implement circular economy business models (e.g. take back arrangements, Pallet LOOP)
- Ensure construction components are designed for flexibility, disassembly and reuse
- Ensure correct detailing of timber components to ensure service life is met
- Work with timber industry to insist on standards for the structural grading of reused timbers



# Contact Details



## Charlie Law - Sustainability Director Timber Development UK

Building Centre, Store Street, London WC1E 7BT

Phone: 07768 707669

Email: [claw@timberdevelopment.uk](mailto:claw@timberdevelopment.uk)



@CharlesLaw\_SCS

# Thank You