

**BANKSIDE
OPEN SPACES
TRUST**

**MARLBOROUGH
SPORTS GARDEN**



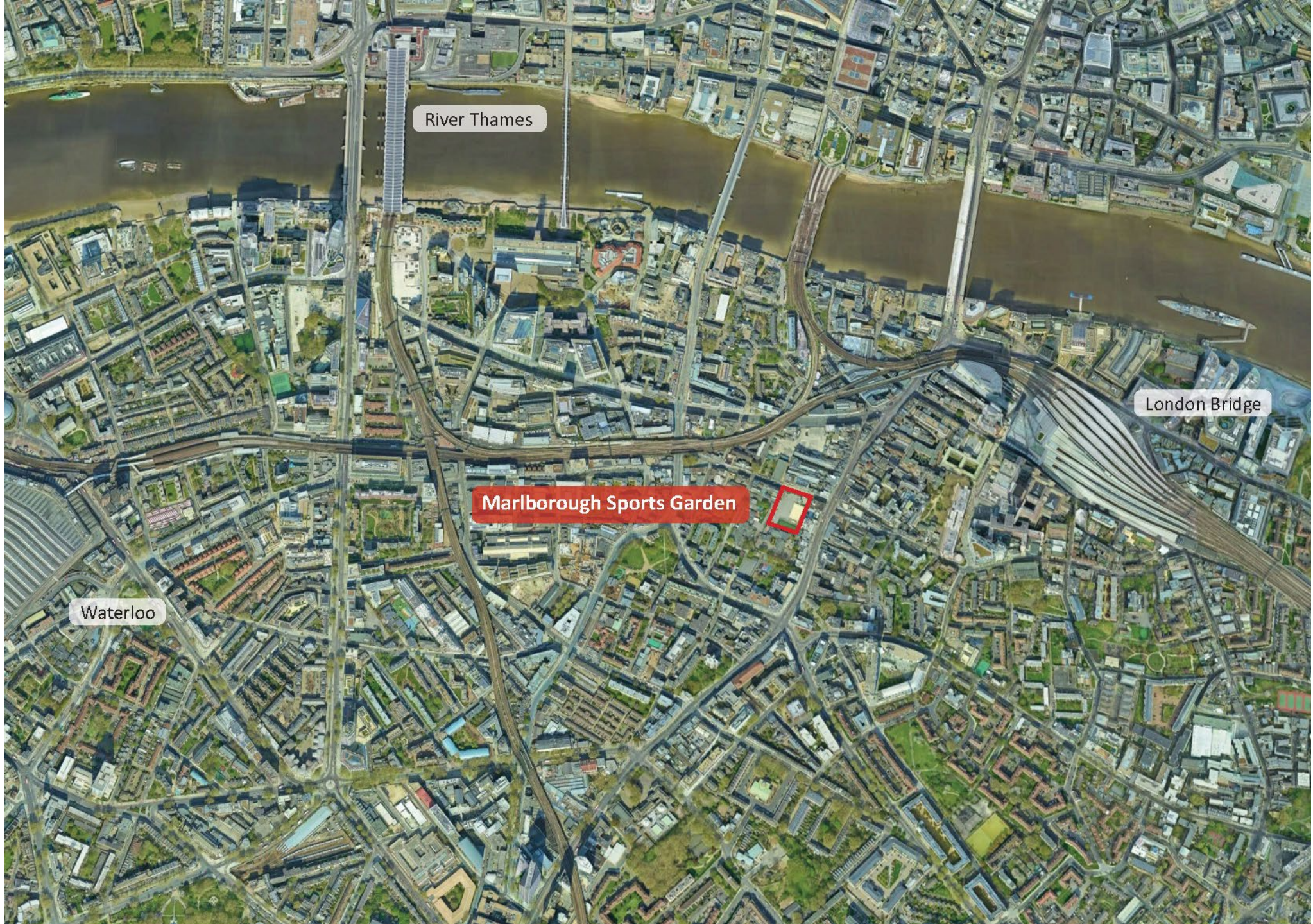
Bristow

turkington martin

ENGENUITY

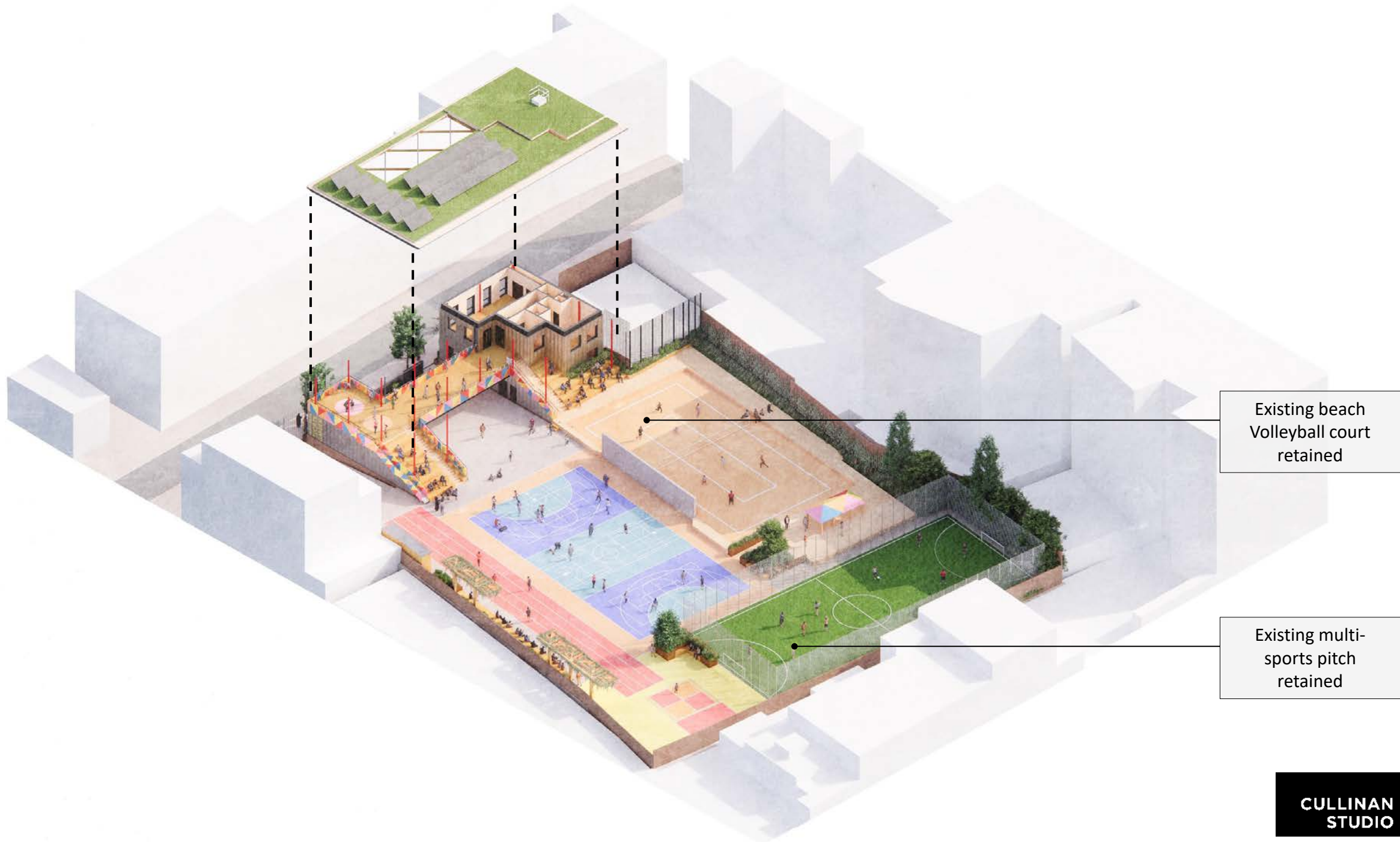
CUNDALL

**CULLINAN
STUDIO**



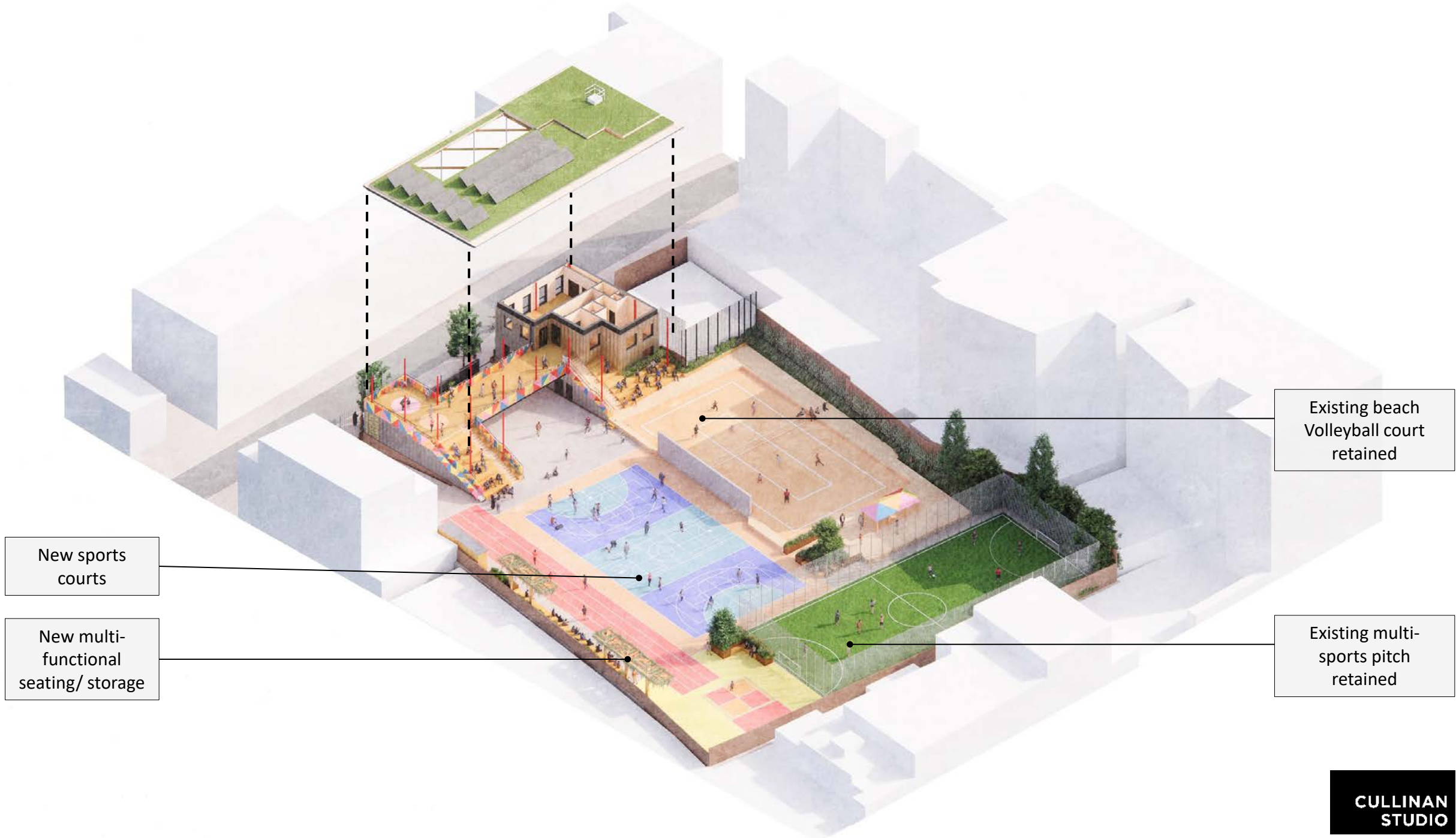






Existing beach
Volleyball court
retained

Existing multi-
sports pitch
retained

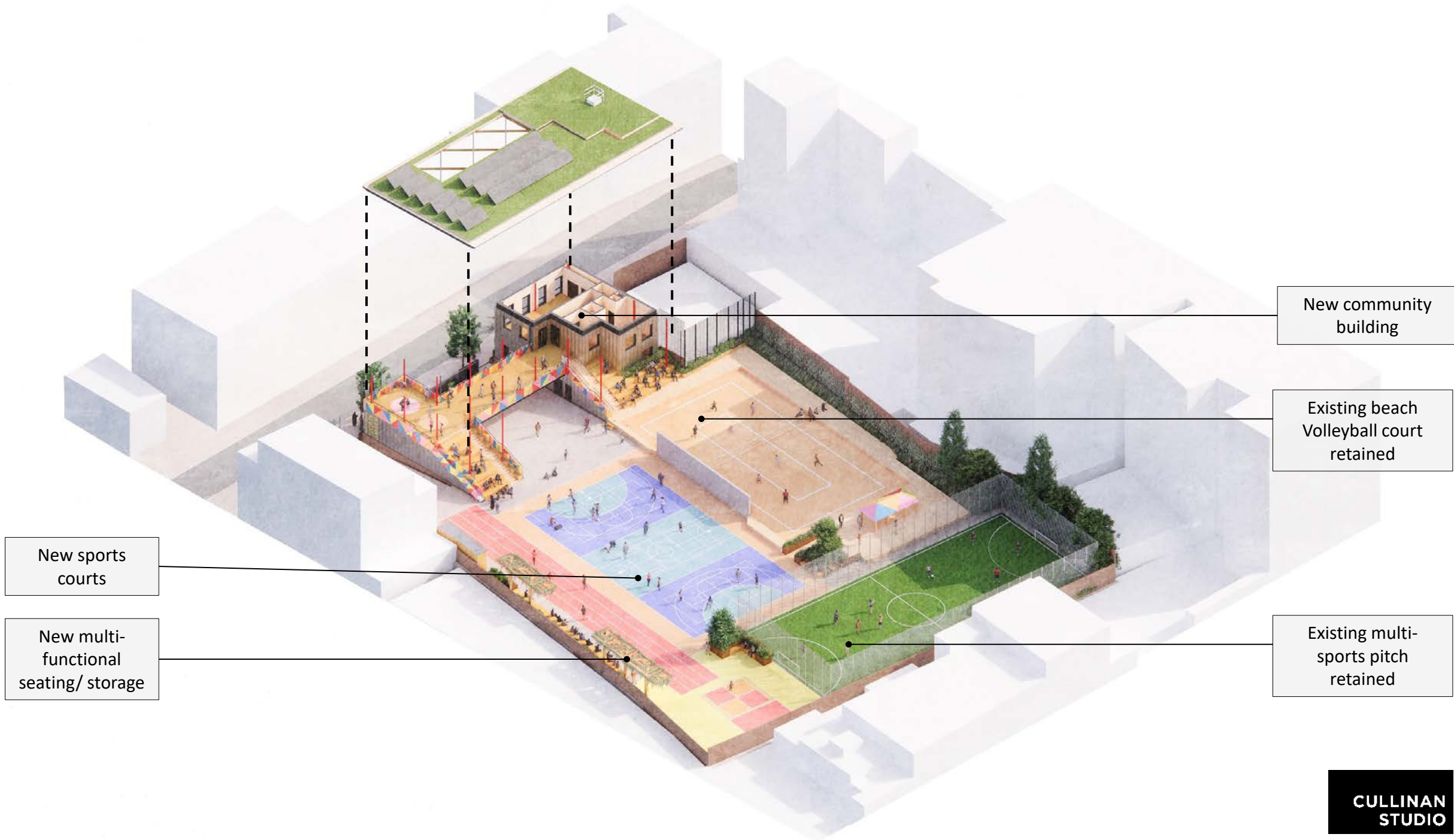


New sports
courts

New multi-
functional
seating/ storage

Existing beach
Volleyball court
retained

Existing multi-
sports pitch
retained



New sports
courts

New multi-
functional
seating/
storage

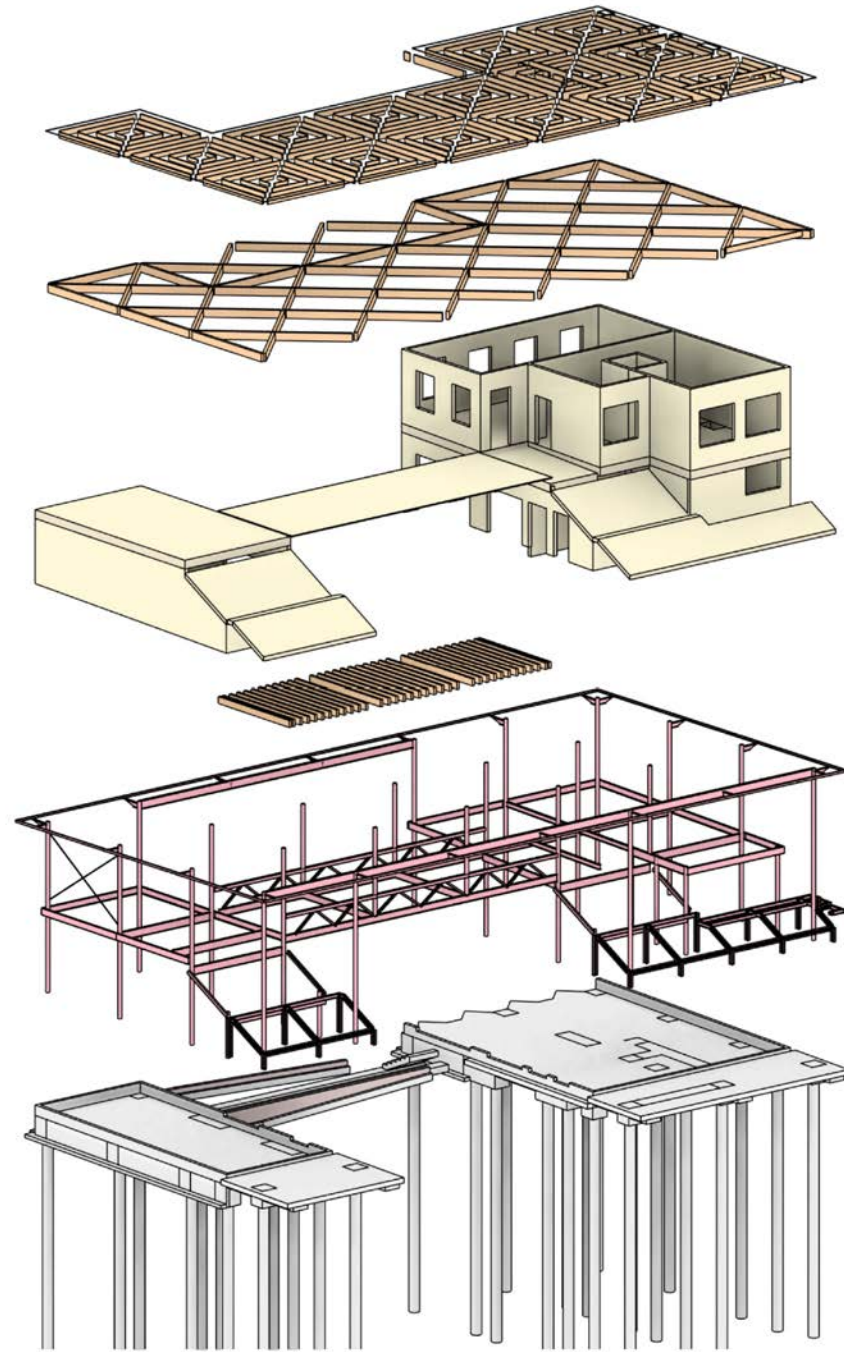
New community
building

Existing beach
Volleyball court
retained

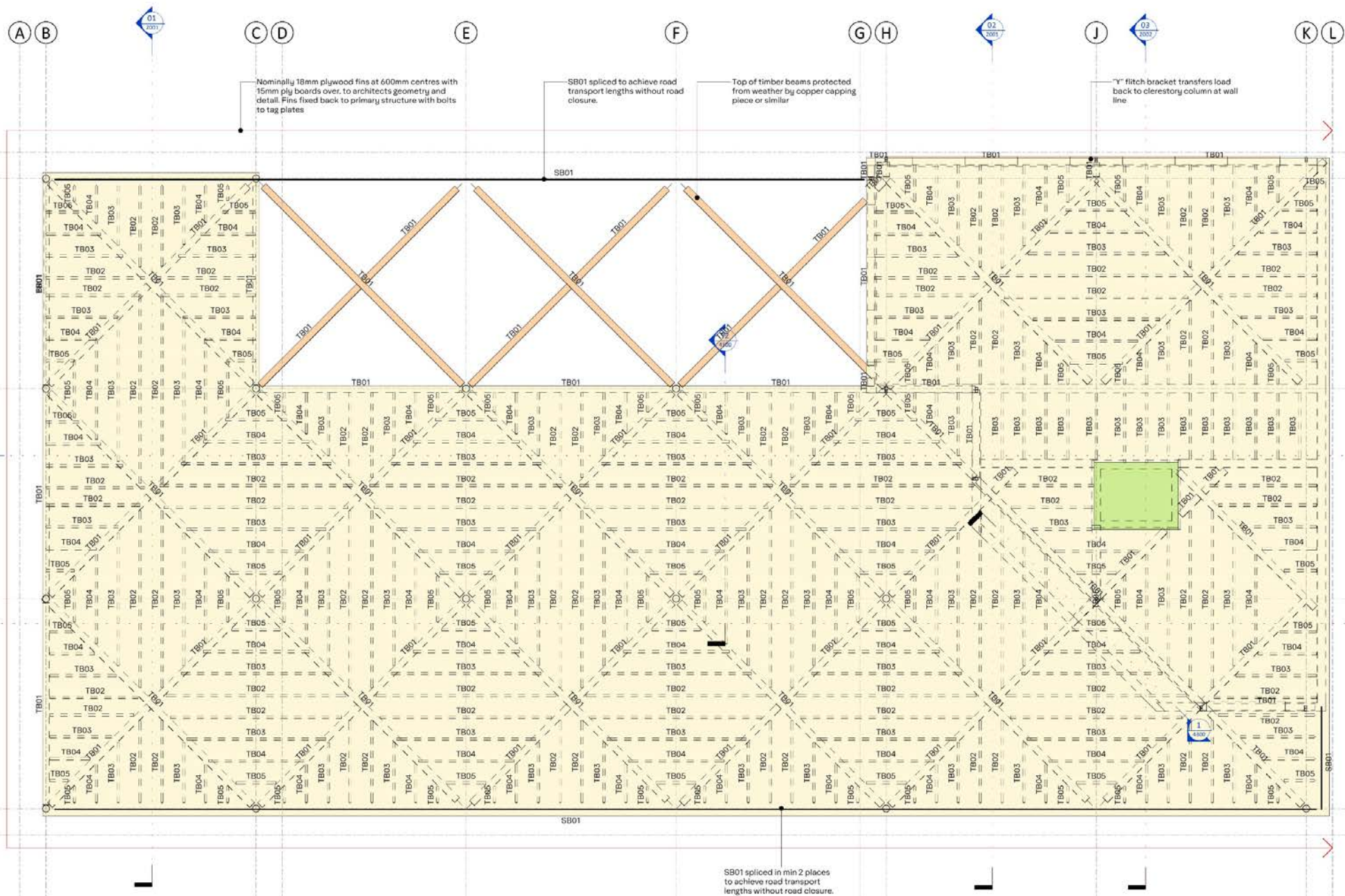
Existing multi-
sports pitch
retained











A B

C D

E

F

G H

J

K L

1
2

3

4

5
6

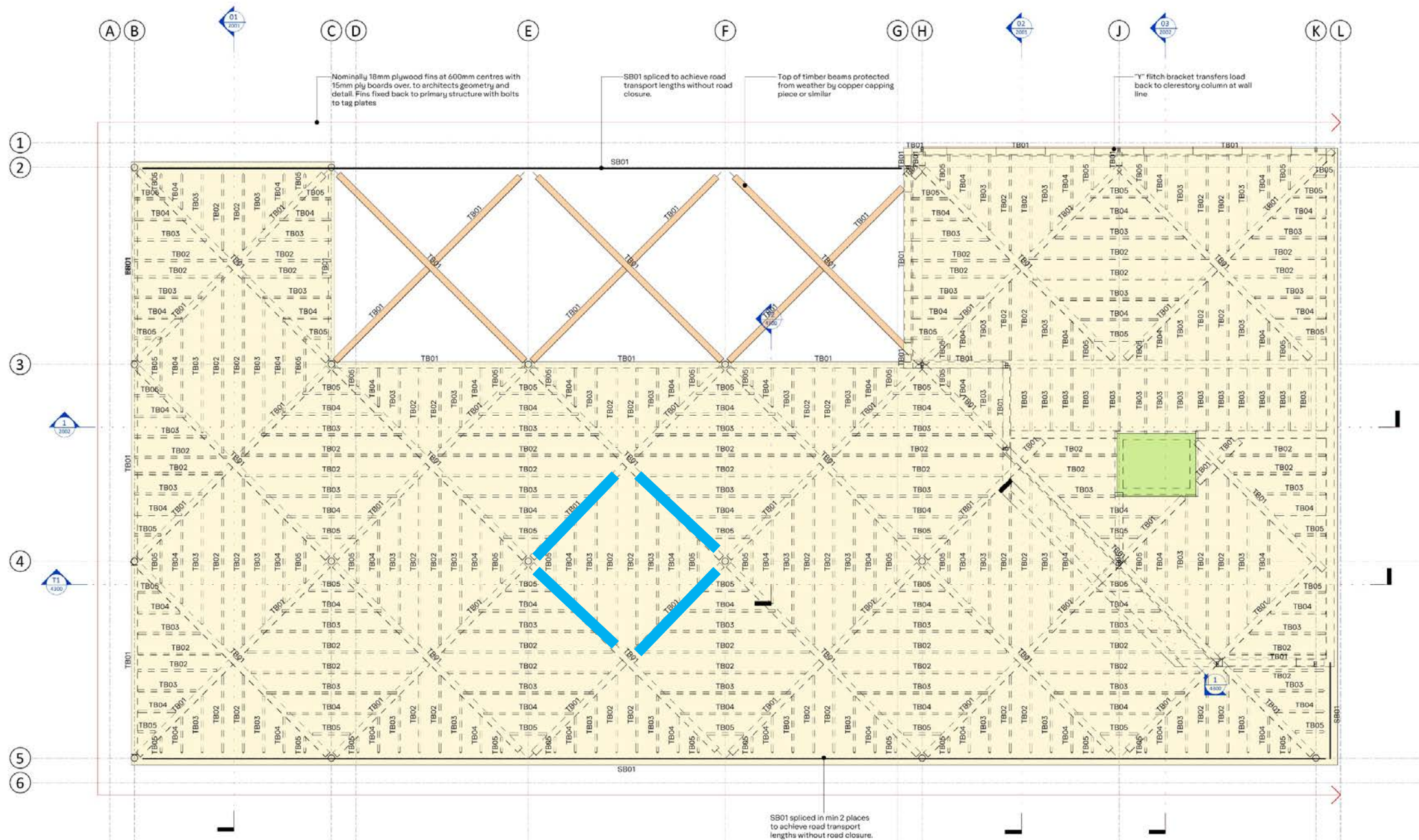
Nominally 18mm plywood fins at 600mm centres with 15mm ply boards over, to architect's geometry and detail. Fins fixed back to primary structure with bolts to tag plates

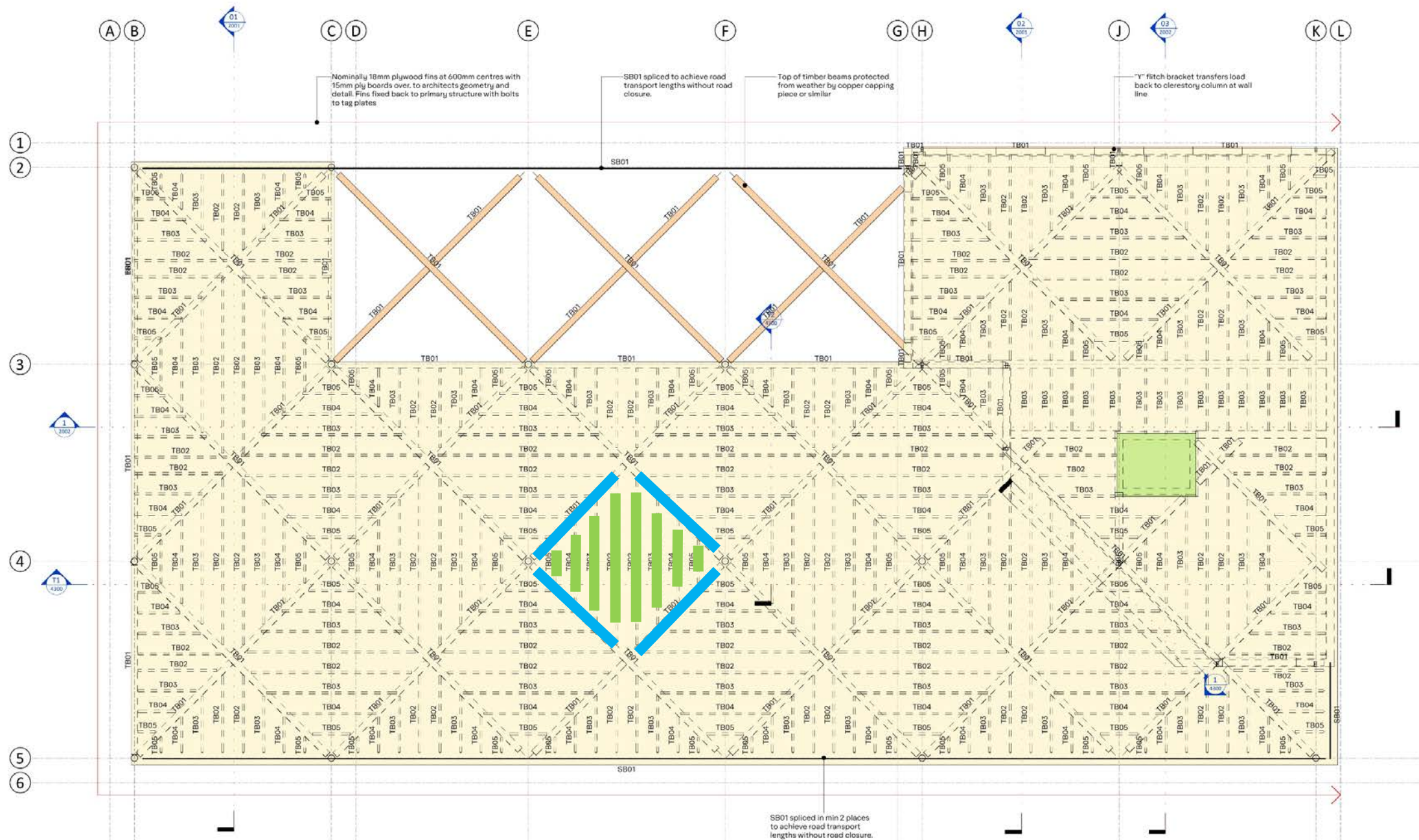
SB01 spliced to achieve road transport lengths without road closure.

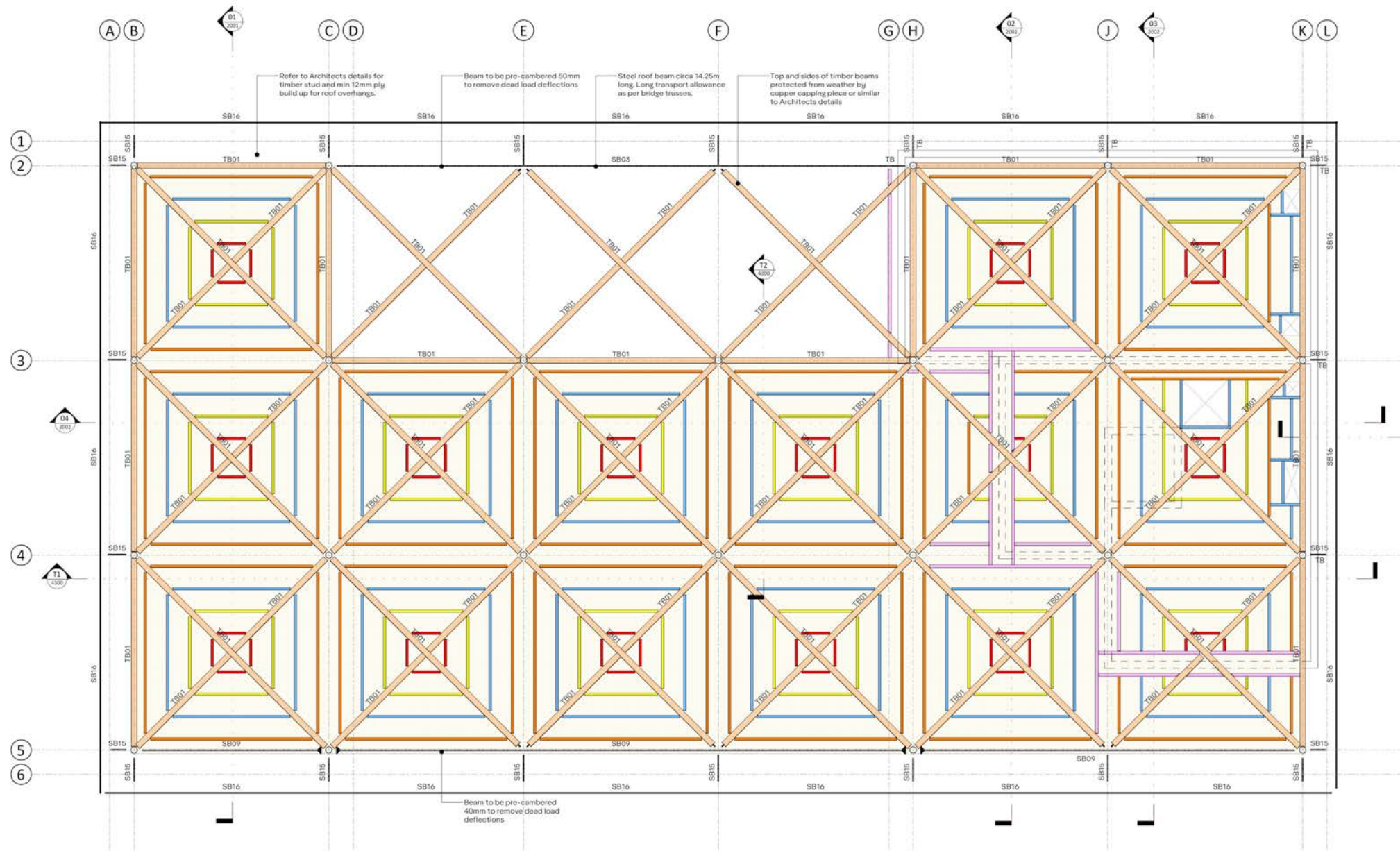
Top of timber beams protected from weather by copper capping piece or similar

'Y' flitch bracket transfers load back to clerestory column at wall line

SB01 spliced in min 2 places to achieve road transport lengths without road closure.





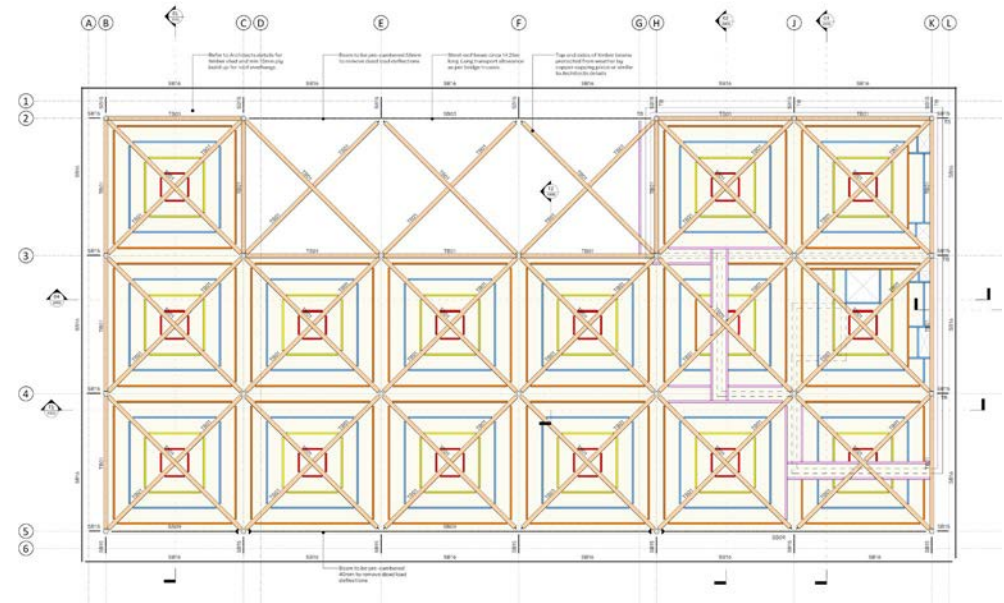


Reclaimed Note:

All steel and timber in beam and column schedules to be sourced from reclaimed sections. Grades marked are minimums required and if issues with availability, contact Design Team to discuss alternative sizes/weights.



If difficulty with limited supply of D70 reclaimed greenheart, Infill joists TB02, 03, 04 and 05 can be replaced with min Grade C16, 75 mm width x 300, 250, 200 and 150 mm deep joists respectively

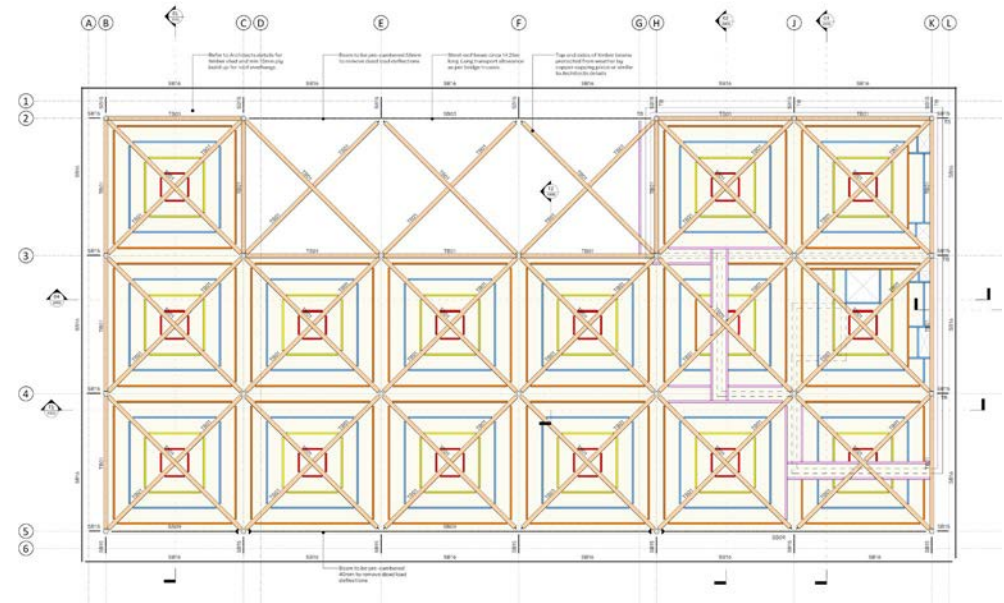


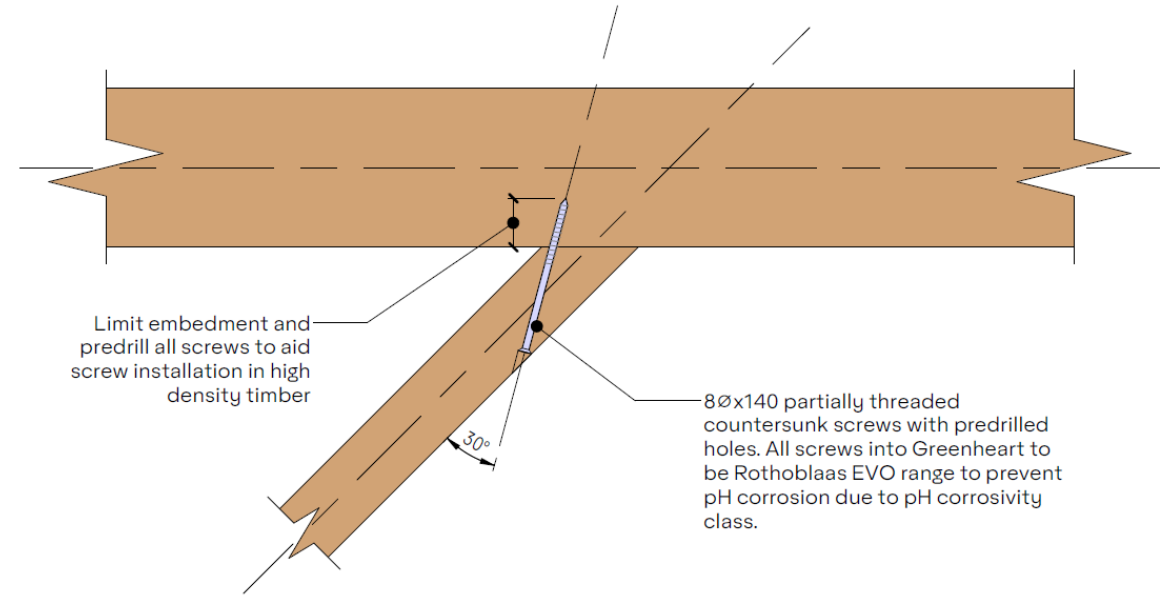
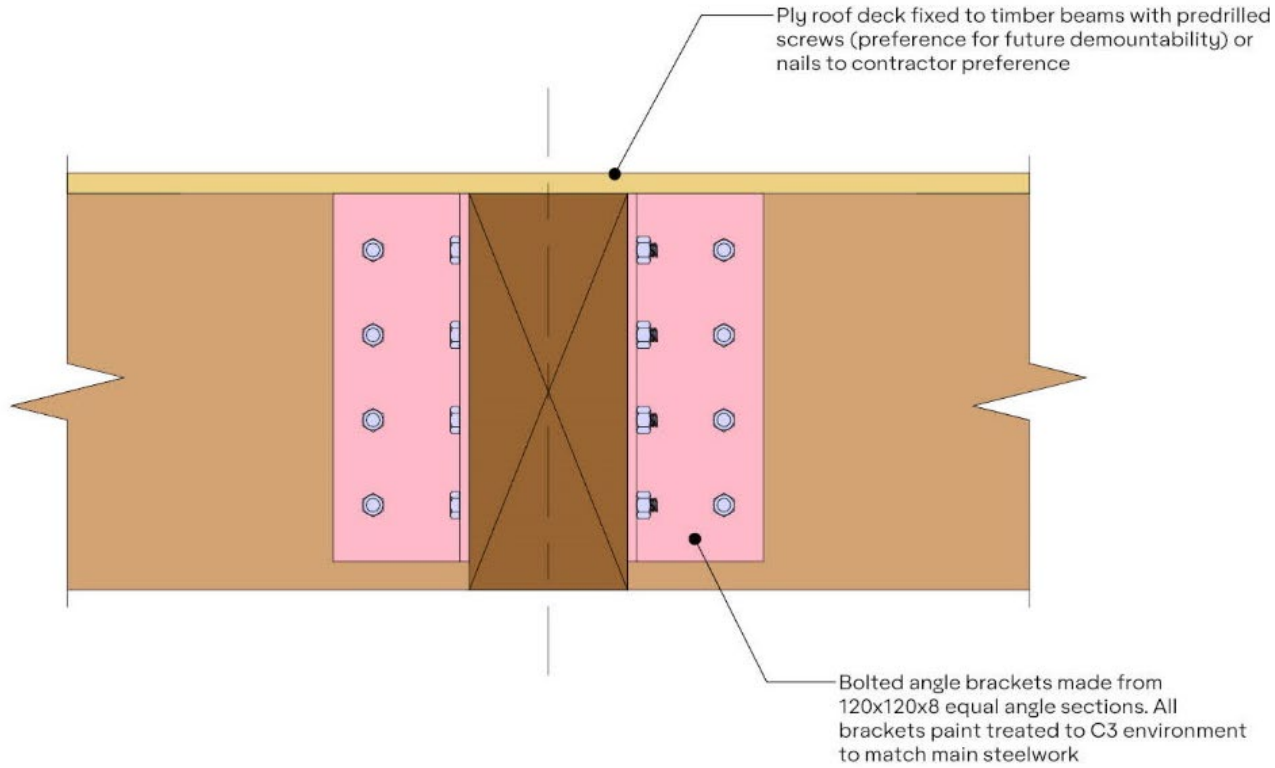
Reclaimed Note:

All steel and timber in beam and column schedules to be sourced from reclaimed sections. Grades marked are minimums required and if issues with availability, contact Design Team to discuss alternative sizes/weights.



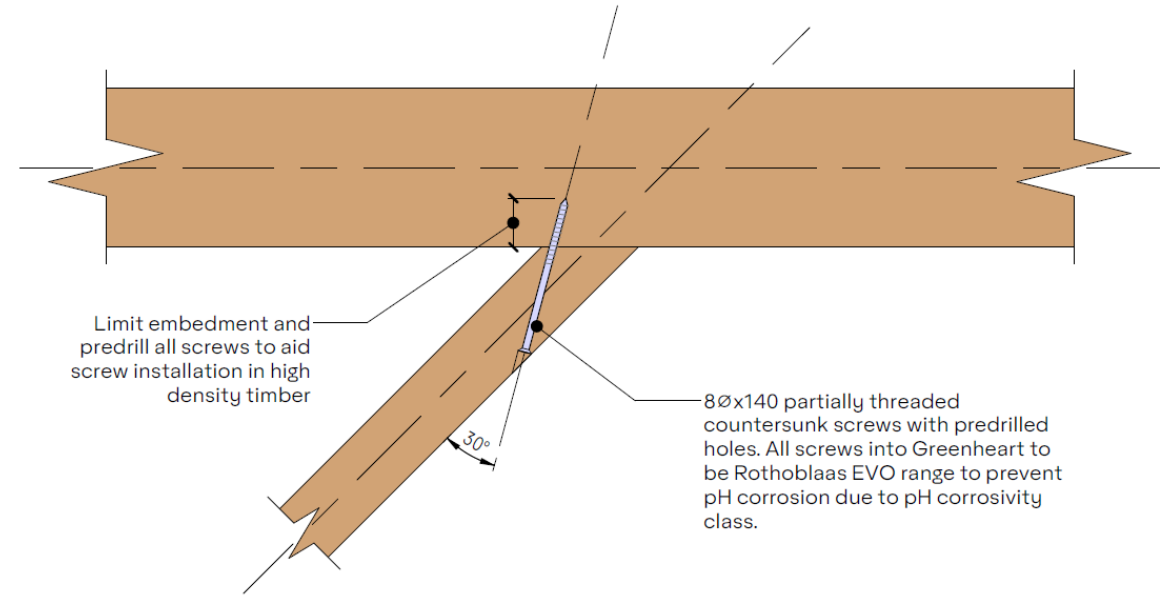
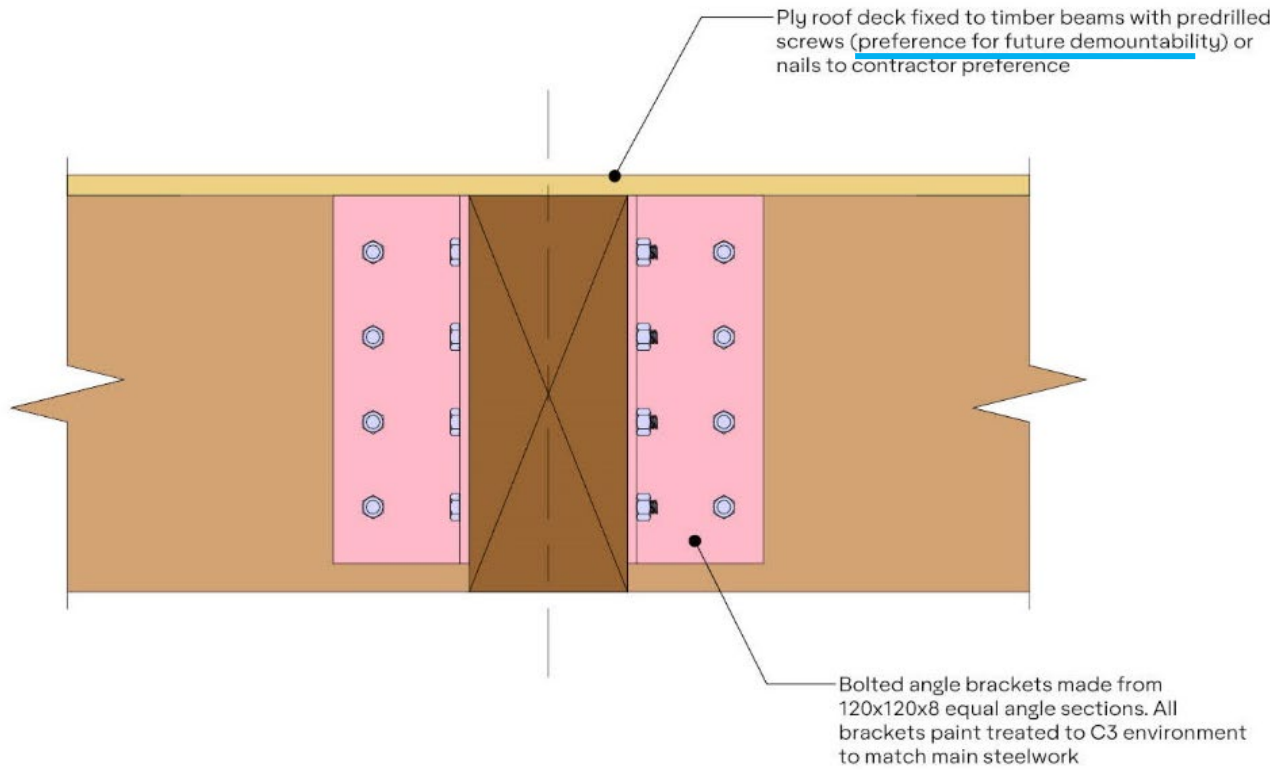
If difficulty with limited supply of D70 reclaimed greenheart, Infill joists TB02, 03, 04 and 05 can be replaced with min Grade C16, 75 mm width x 300, 250, 200 and 150 mm deep joists respectively





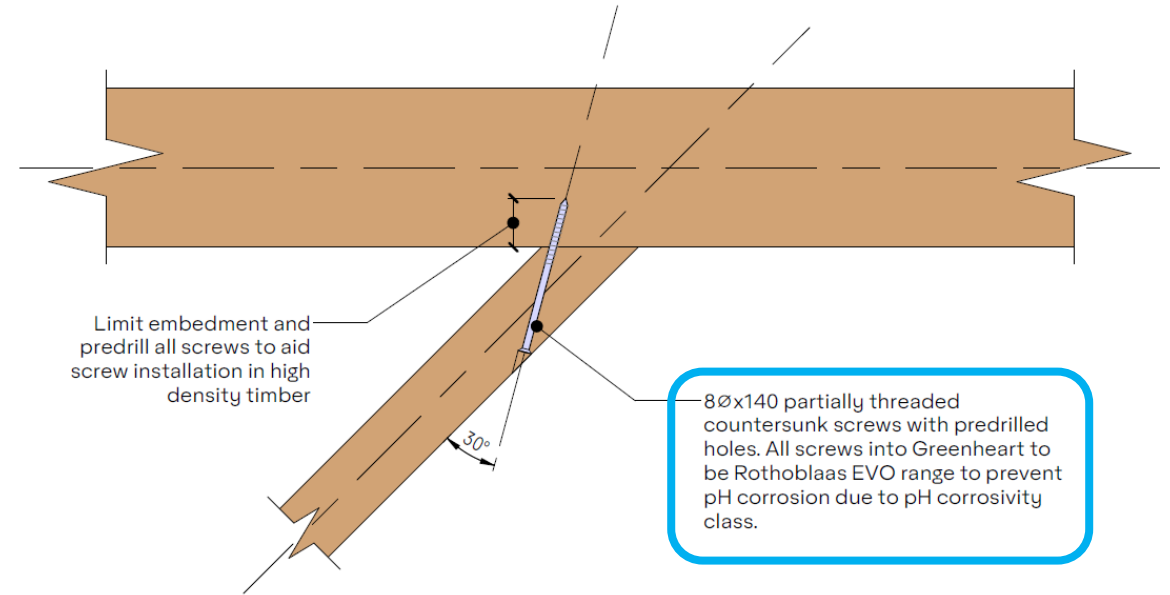
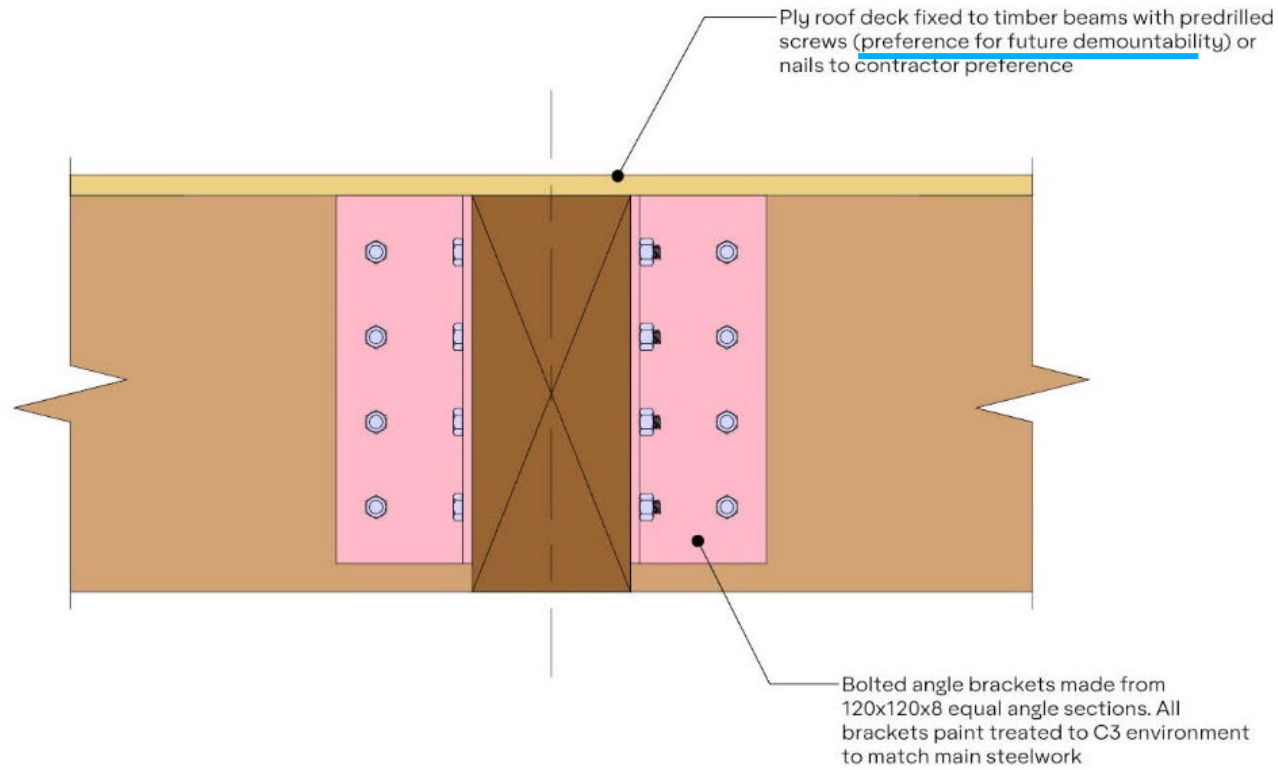
Detail 4 - Typical Roof Joist to Roof Beam

1:5



Detail 4 - Typical Roof Joist to Roof Beam

1:5



Detail 4 - Typical Roof Joist to Roof Beam

1:5

| Build-up types | | | | | | Parameters | | | |
|--------------------------------------|---------------|-------------------|------------------|-----------------------------|---|--------------|-------------------------|--------------|---------------------------|
| Insulation | | | | | | | | | |
| Location | Specification | Type | Preference order | Preferred Supplier | Product link | Availability | Certification/ warranty | Location | Distance from MSG (miles) |
| External cassette fill | Fire tested | Varies | 1 | Seconds & Co | https://www.secondsandco.co.uk/product-page/ | Stock | Approved by Kingspan | Presteigne | 153 |
| | Fire tested | Varies | 2 | Reclaimed company | https://shop.thereclaimedcompany.co.uk/home/ | Day to day | / | York | 202 |
| | Fire tested | Varies | 3 | Natural insulations | https://naturalinsulations.co.uk/product/thermafi | Stock | / | Penrith | 275 |
| Frame fit insulation behind cladding | Fire tested | Varies | 1 | Seconds & Co | https://www.secondsandco.co.uk/product-page/ | Stock | Approved by Kingspan | Presteigne | 153 |
| | Fire tested | Varies | 2 | Green Insulation | https://greeninsulationgroup.com/products/ | Stock | / | Wickford | 30 |
| Roof | Fire tested | Varies | 1 | Reclaimed company | https://shop.thereclaimedcompany.co.uk/home/ | Day to day | / | York | 202 |
| | Fire tested | Varies | 2 | Bauder | https://www.bauder.co.uk/flat-roof-solutions/ins | Stock | Tested | Germany | - |
| Ground Floor | Fire tested | Varies | 1 | Reclaimed company | https://shop.thereclaimedcompany.co.uk/home/ | Day to day | / | York | 202 |
| | Fire tested | Varies | 2 | Bauder | https://www.bauder.co.uk/flat-roof-solutions/ins | Stock | Tested | Germany | |
| Intermediate Floors | Fire tested | Varies | 1 | Seconds & Co | https://www.secondsandco.co.uk/product-page/ | Stock | Approved by Kingspan | Presteigne | 153 |
| | Fire tested | Varies | 2 | Reclaimed company | https://shop.thereclaimedcompany.co.uk/home/ | Day to day | / | York | 202 |
| | | | | | | | | | |
| Cladding | | | | | | | | | |
| Location | Specification | Type | Preference order | Preferred Supplier | Product link | Availability | Certification/ warranty | Location | Distance from MSG (miles) |
| External sinusoidal | Treated | Corrugated sheets | 1 | Hadley reclaimed | https://www.hadley-reclaimed.co.uk/scaffold-bo | Day to day | Tested | Burton | 124 |
| | Treated | Corrugated sheets | 2 | Ace reclaim | https://www.acereclamation.com/RECLAIMED-CC | Day to day | / | Dorset | 109 |
| External base brickwork | Treated | All bricks | 1 | London Reclaimed brick merc | Reclaimed Bricks, Tiles & Slates in London, Essex & | Stock | Quality checked | West Drayton | 18 |
| | Treated | All bricks | 2 | Sussex Salvage | https://authentic-reclamation.co.uk/about-us/cor | Stock | Quality checked | Sussex | 45 |
| | Treated | All bricks | 3 | Dorton | https://www.dortonreclaim.com/ | Day to day | Quality checked | Horsham | 40 |
| | Treated | All bricks | 4 | Reclaimed brick co | https://reclaimedbrickcompany.co.uk/pages/cont | Stock | Quality checked | Sheffield | 160 |

Table 3.4: General Project Specific Data

| Element | Sawn Tropical Hardwood | Sawn Softwood |
|-----------|---|--|
| Reference | TBXX / TCXX | TBXX / TCXX |
| Species | <i>Greenheart (FSC certified reclaimed)</i> | <i>Douglas Fir or approved alternative (FSC certified reclaimed)</i> |

5.1 Timber General

5.1.1 Reclaimed Timber

Reclaimed/reused timber is to be used where possible, in particular for elements noted on the structural drawings as being from a reclaimed source. If at the time of procurement, there are issues with availability of reclaimed/reused timber elements, the design team is to be engaged to discuss alternatives.

Suppliers of reclaimed timber include: Ashwells, Wick Place Farm, Brentwood Rd, Bulpham, Upminster, Essex, RM14 3TL

Table 3.4: General Project Specific Data

| Element | Sawn Tropical Hardwood | Sawn Softwood |
|-----------|--|--|
| Reference | TBXX / TCXX | TBXX / TCXX |
| Species | <i>Greenheart</i> (FSC certified reclaimed) | <i>Douglas Fir</i> or approved alternative (FSC certified reclaimed) |

5.1 Timber General

5.1.1 Reclaimed Timber

Reclaimed/reused timber is to be used where possible, in particular for elements noted on the structural drawings as being from a reclaimed source. If at the time of procurement, there are issues with availability of reclaimed/reused timber elements, the design team is to be engaged to discuss alternatives.

Suppliers of reclaimed timber include: Ashwells, Wick Place Farm, Brentwood Rd, Bulpham, Upminster, Essex, RM14 3TL

Table 3.4: General Project Specific Data

| Element | Sawn Tropical Hardwood | Sawn Softwood |
|-----------|--|--|
| Reference | TBXX / TCXX | TBXX / TCXX |
| Species | <i>Greenheart</i> (FSC certified reclaimed) | <i>Douglas Fir</i> or approved alternative (FSC certified reclaimed) |

5.1 Timber General

5.1.1 Reclaimed Timber

Reclaimed/reused timber is to be used where possible, in particular for elements noted on the structural drawings as being from a reclaimed source. If at the time of procurement, there are issues with availability of reclaimed/reused timber elements, the design team is to be engaged to discuss alternatives.

Suppliers of reclaimed timber include: Ashwells, Wick Place Farm, Brentwood Rd, Bulpham, Upminster, Essex, RM14 3TL

5.1.4 Life Cycle Analysis (LCA) and Environmental Product Declarations (EPD)

The Timber Contractor is required to provide final material volumes and quantities for the Design Team's LCA. EPDs should also be provided for all construction products.

5.1.5 Reuse and Recycling

No treatments or finishes should be applied to any structural timber element or Component that will overly reduce its recycle or re-use potential.

Connections should be designed to maximise the potential for future disassembly and reuse.

5.1.4 Life Cycle Analysis (LCA) and Environmental Product Declarations (EPD)

The Timber Contractor is required to provide final material volumes and quantities for the Design Team's LCA. EPDs should also be provided for all construction products.

5.1.5 Reuse and Recycling

No treatments or finishes should be applied to any structural timber element or Component that will overly reduce its recycle or re-use potential.

Connections should be designed to maximise the potential for future disassembly and reuse.

5.1.4 Life Cycle Analysis (LCA) and Environmental Product Declarations (EPD)

The Timber Contractor is required to provide final material volumes and quantities for the Design Team's LCA. EPDs should also be provided for all construction products.

5.1.5 Reuse and Recycling

No treatments or finishes should be applied to any structural timber element or Component that will overly reduce its recycle or re-use potential.

Connections should be designed to maximise the potential for future disassembly and reuse.

5.1.6 Certification and CE Marking

Reclaimed/reused structural timber elements are to be inspected by a suitably qualified person to determine strength grade and suitability for structural use. Reclaimed Tropical Hardwood timber elements are strength graded according to BS EN 16737:2016 'Structural Timber. Visual strength grading of tropical hardwood'. Reclaimed Softwood timber elements are strength graded according to BS 4978:2007+A2:2017 'Visual strength grading of softwood. Specification'.

Timber elements must be strength graded after being machined to their finished size, unless machining is strictly limited to the limits stated in BS 14081-1:2016 +A1:2019.

5.1.6 Certification and CE Marking

Reclaimed/reused structural timber elements are to be inspected by a suitably qualified person to determine strength grade and suitability for structural use. Reclaimed Tropical Hardwood timber elements are strength graded according to BS EN 16737:2016 'Structural Timber. Visual strength grading of tropical hardwood'. Reclaimed Softwood timber elements are strength graded according to BS 4978:2007+A2:2017 'Visual strength grading of softwood. Specification'.

Timber elements must be strength graded after being machined to their finished size, unless machining is strictly limited to the limits stated in BS 14081-1:2016 +A1:2019.

5.1.6 Certification and CE Marking

Reclaimed/reused structural timber elements are to be inspected by a suitably qualified person to determine strength grade and suitability for structural use. Reclaimed Tropical Hardwood timber elements are strength graded according to BS EN 16737:2016 'Structural Timber. Visual strength grading of tropical hardwood'. Reclaimed Softwood timber elements are strength graded according to BS 4978:2007+A2:2017 'Visual strength grading of softwood. Specification'.

Timber elements must be strength graded after being machined to their finished size, unless machining is strictly limited to the limits stated in BS 14081-1:2016 +A1:2019.

THANK YOU



Daniel Bianchi

**CULLINAN
STUDIO**

turkingtonma

CUNDALL