



storaenso

Biodiversity and supply chain transparency from forests to buildings

Forestry, biodiversity and sourcing cross laminated timber (CLT)

Dr Mila Duncheva, Business Development Manager UK & Ireland

mila.duncheva@storaenso.com

About us - The world's oldest limited liability company - 1288



Sales
EUR 11.7 billion

President and CEO
Hans



Employees
21 000

Shares listed
on Nasdaq in
Helsinki and
Stockholm



The oldest known preserved share certificate in the world

Stora Enso exited Russian operations in 2022.



Growth
Forest

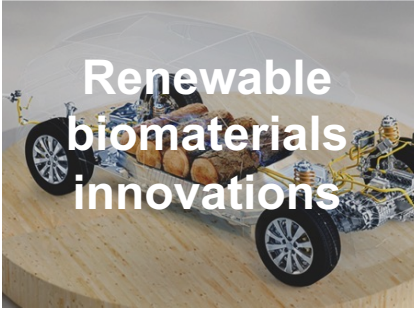
Foundation



Renewable
packaging



Renewable
building
solutions



Renewable
materials
innovations

Biomaterials

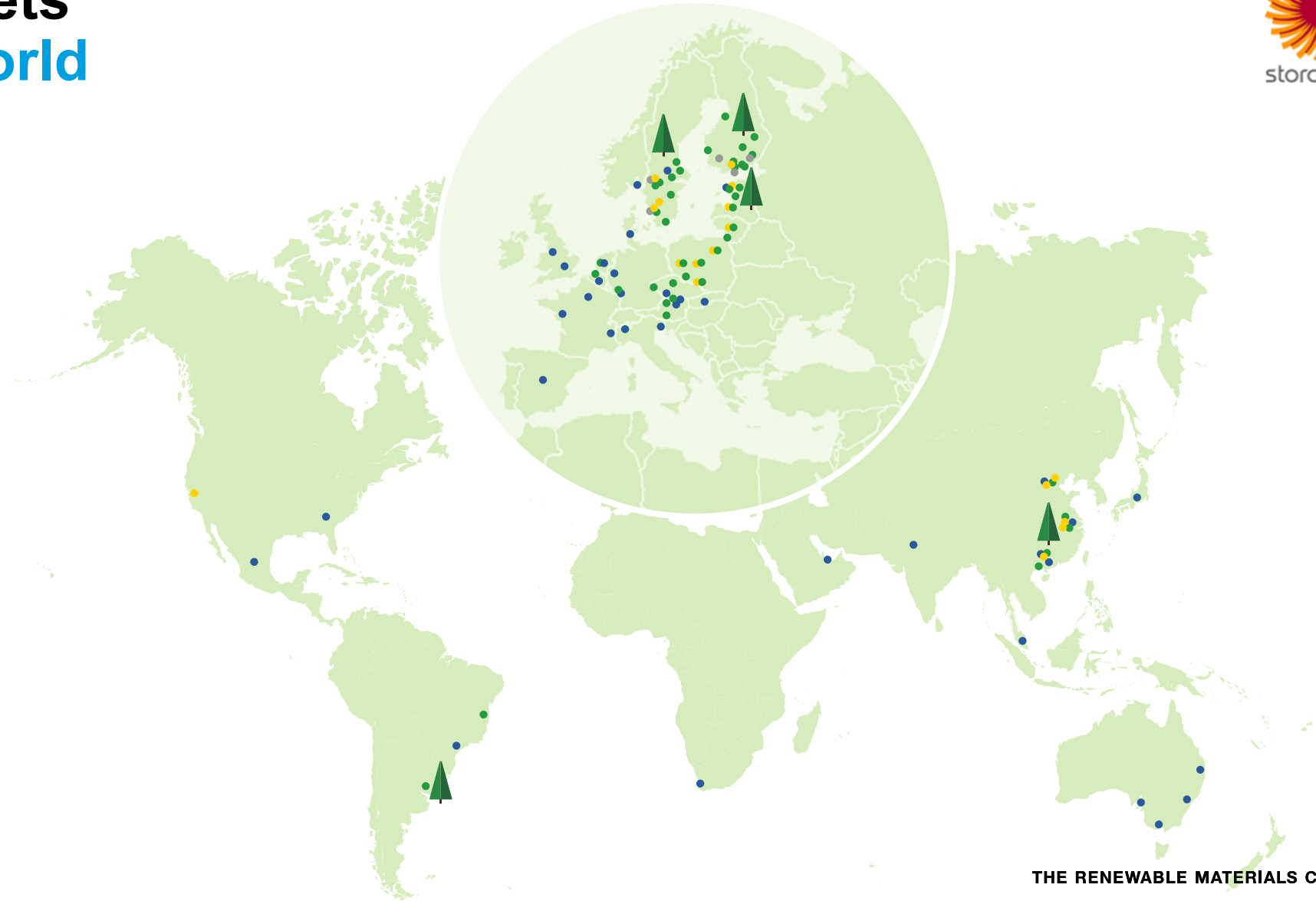
THE RENEWABLE MATERIALS COMPANY

Serving markets around the world



- Production unit
- Sales office
- Design Studio
- Innovation Centre
- ▲ Forests and plantations

Stora Enso manages its own and leased forest land covering a total area of **2 million hectares** worldwide





storaenso

THE RENEWABLE MATERIALS COMPANY

Examples of biodiversity management practices in Stora Enso's Northern forests



High stumps

High stumps created during harvesting are standing deadwood that can be inhabited by birds and insects.



Tree retention

Creating variability of trees of different ages and promoting natural creation of deadwood.



Protection of prioritised habitats

No harvesting done in ecologically and culturally valuable areas.



Forest structure

Rich structural variation enhances biodiversity.



Species-specific conservation

Identifying species of particular conservation interests to actively enhance them.



Decaying wood

Deadwood is an important habitat for many species.



Controlled burning

Example of active biodiversity management to promote species requiring forest fire.



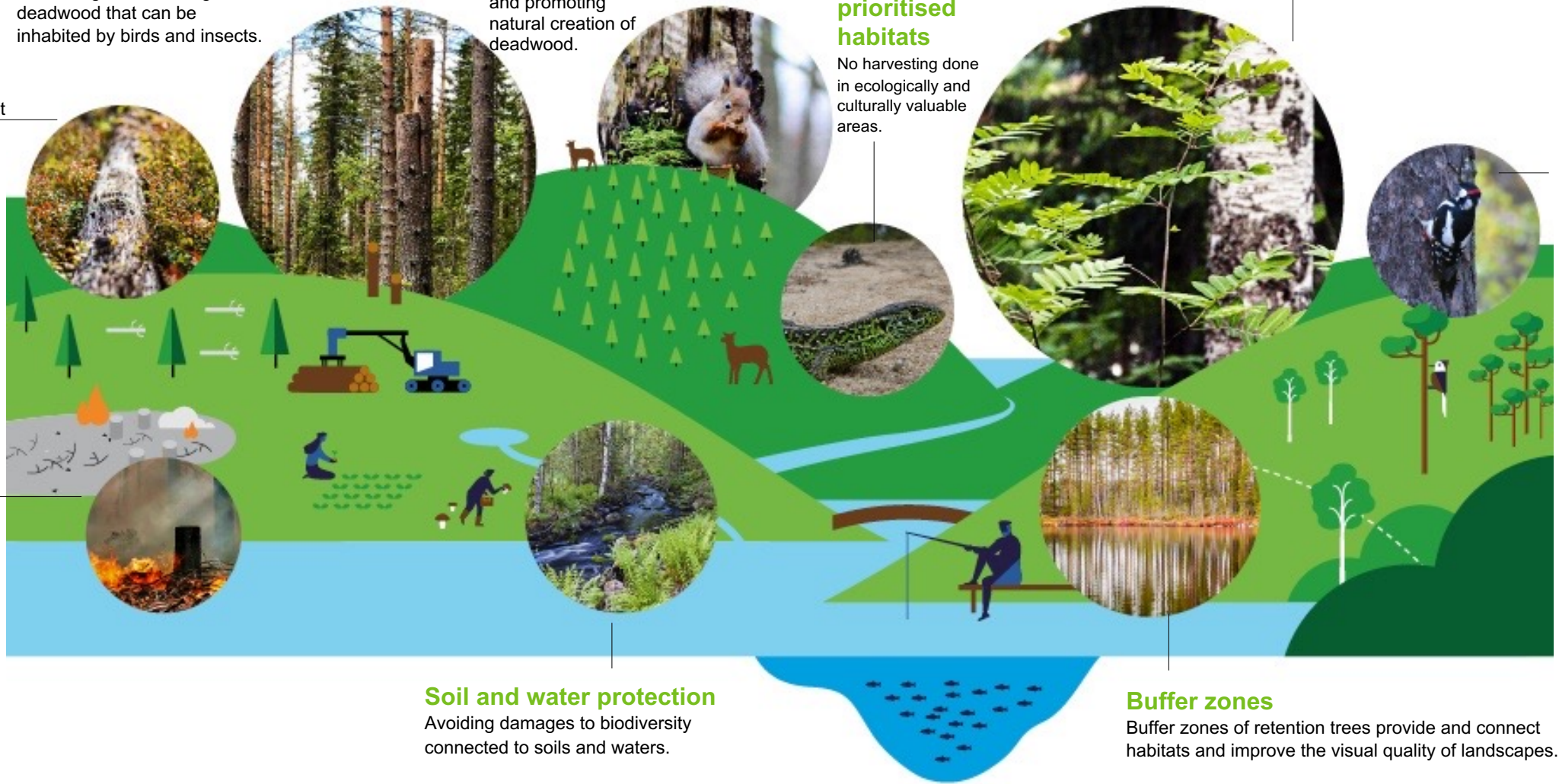
Soil and water protection

Avoiding damages to biodiversity connected to soils and waters.

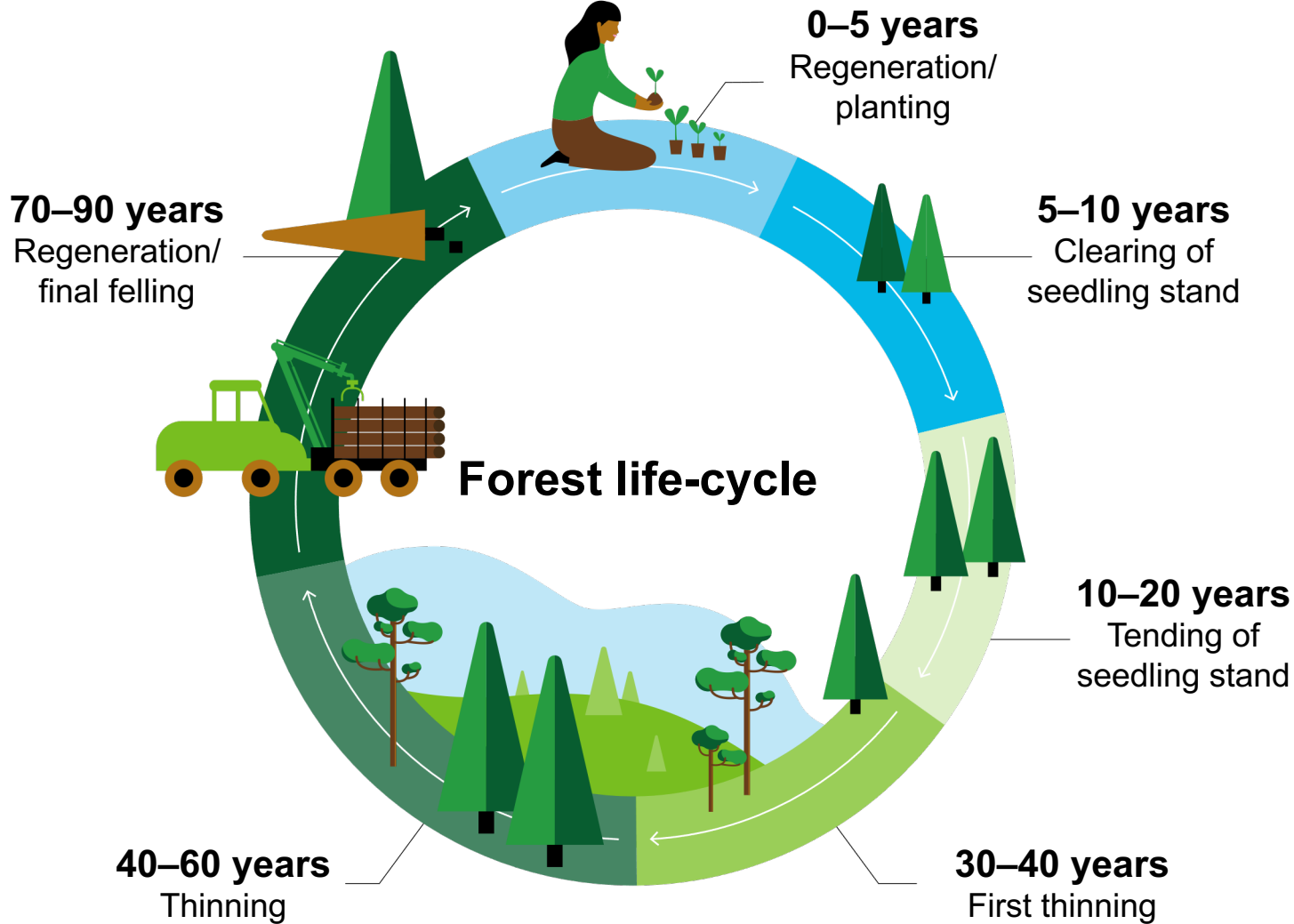


Buffer zones

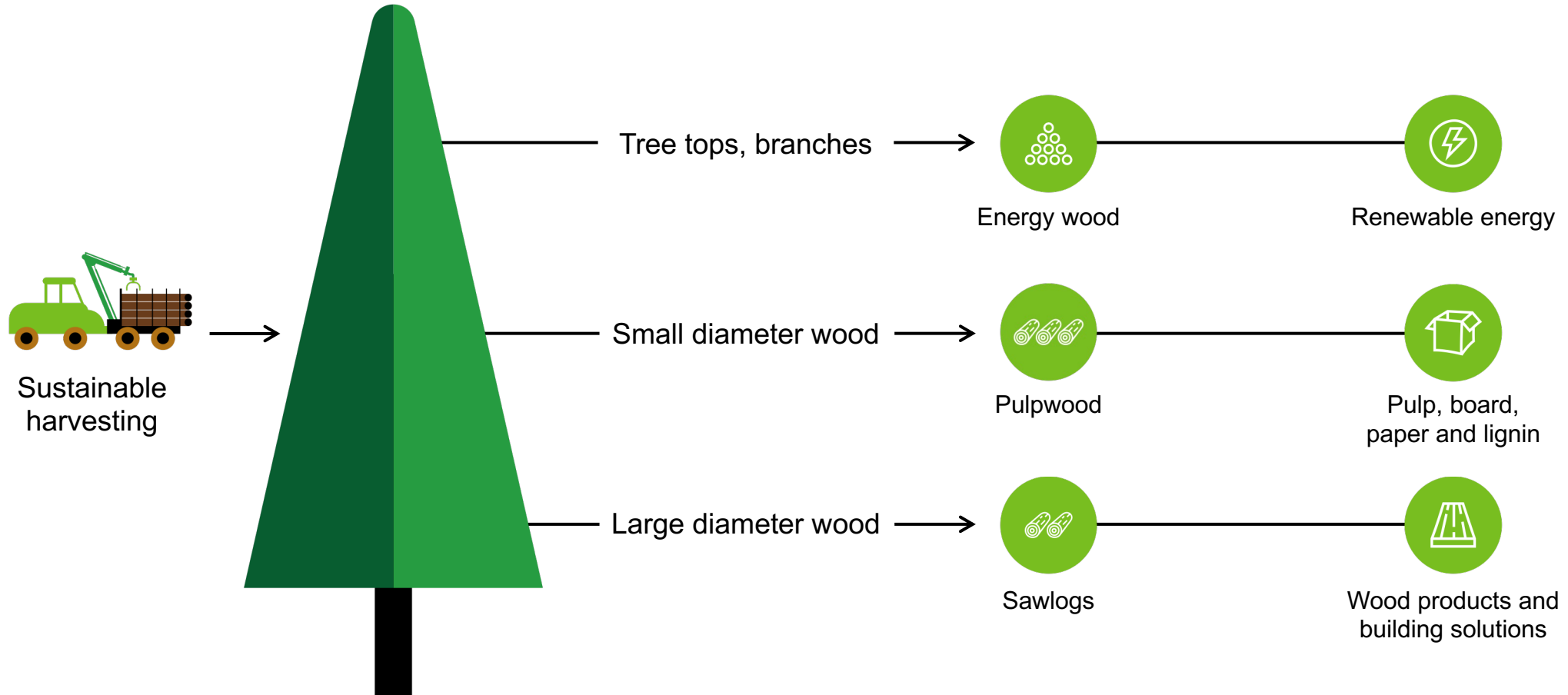
Buffer zones of retention trees provide and connect habitats and improve the visual quality of landscapes.



Silviculture is a nearly 100-year circular project in the Nordics



We use all parts of each harvested tree ensuring optimal use



CLT & LVL



storaenso



490k m3 Mass Timber Capacity 4 CLT Mills | 1 LVL Mill Finland



storaenso

80k

m3 at Bad St.
Leonhard, Austria
since 2008

110k

m3 at Ybbs,
Austria
since 2011

100k

m3 at Gruvön,
Sweden
Since 2018

120k

m3 at Zdirec,
Czechia started in
2023

CLT Ybbs Automated Coating Line



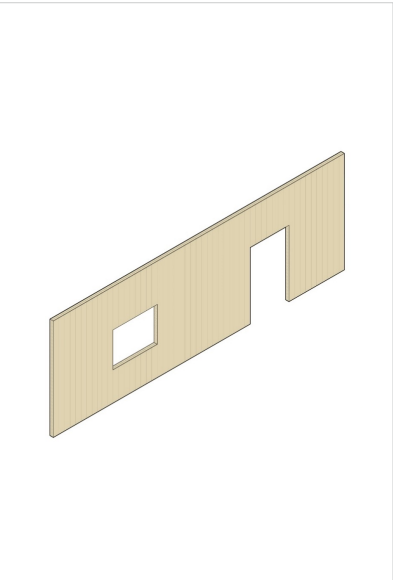
storaenso



The Sylva™ kit of parts

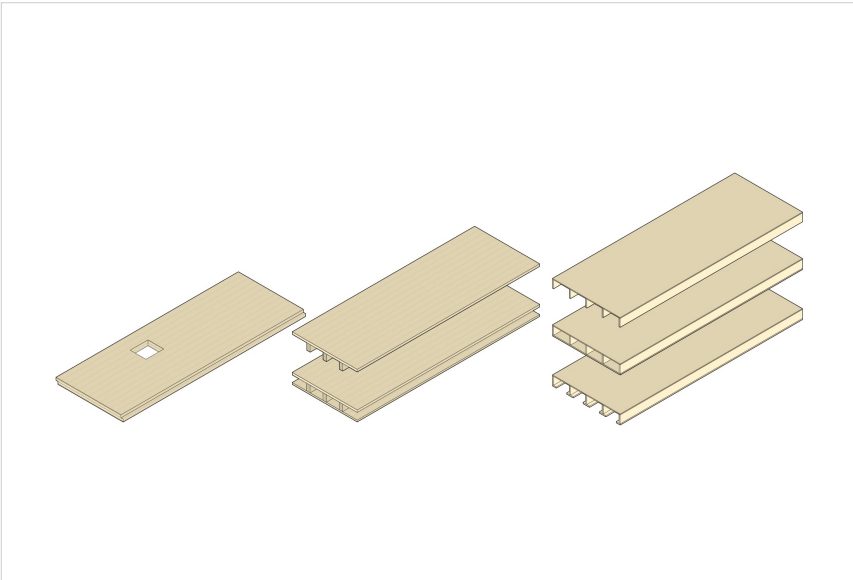


Walls



Sylva CLT walls

Floors and Roofs

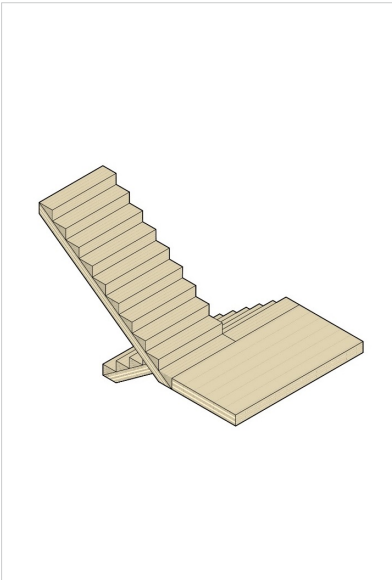


Sylva CLT Floors and Roofs

Sylva CLT RIB Floors and Roofs

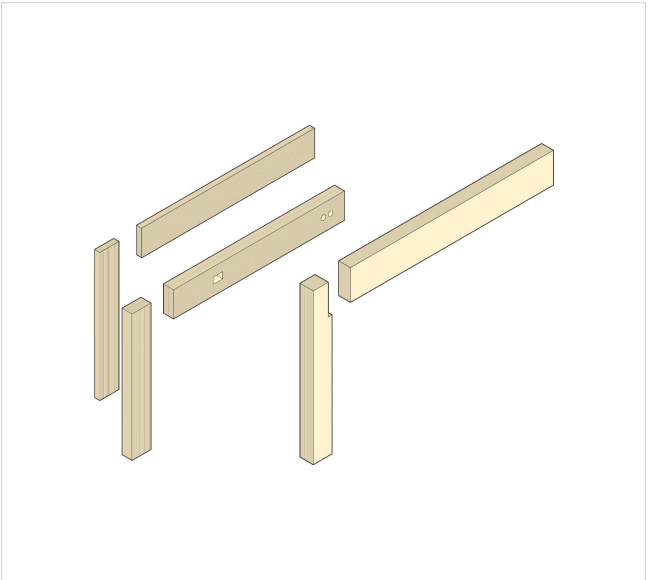
Sylva LVL RIB Floors and Roofs

Stairs



Sylva CLT Stairs

Beams and Columns



Sylva GLT Beams and Columns

Sylva LVL Beams and Columns



storaenso



THE RENEWABLE MATERIALS COMPANY