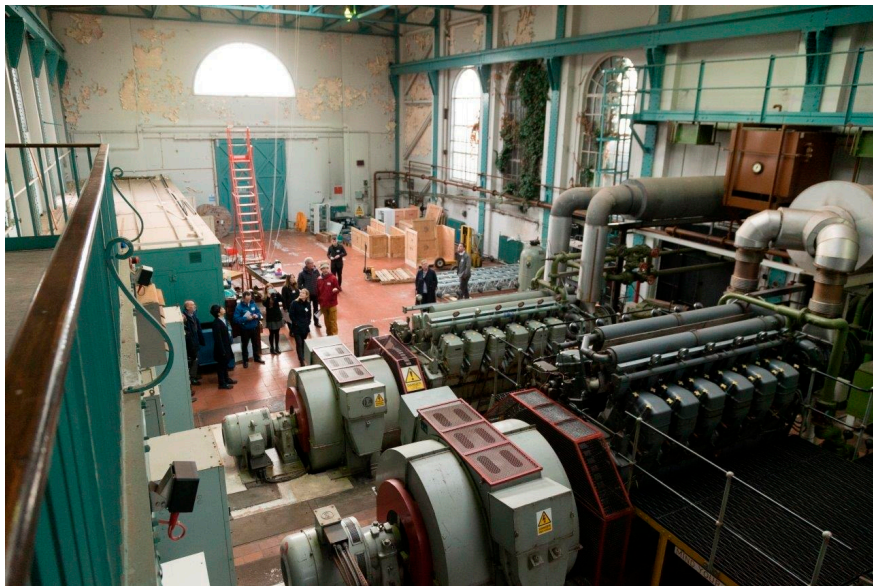
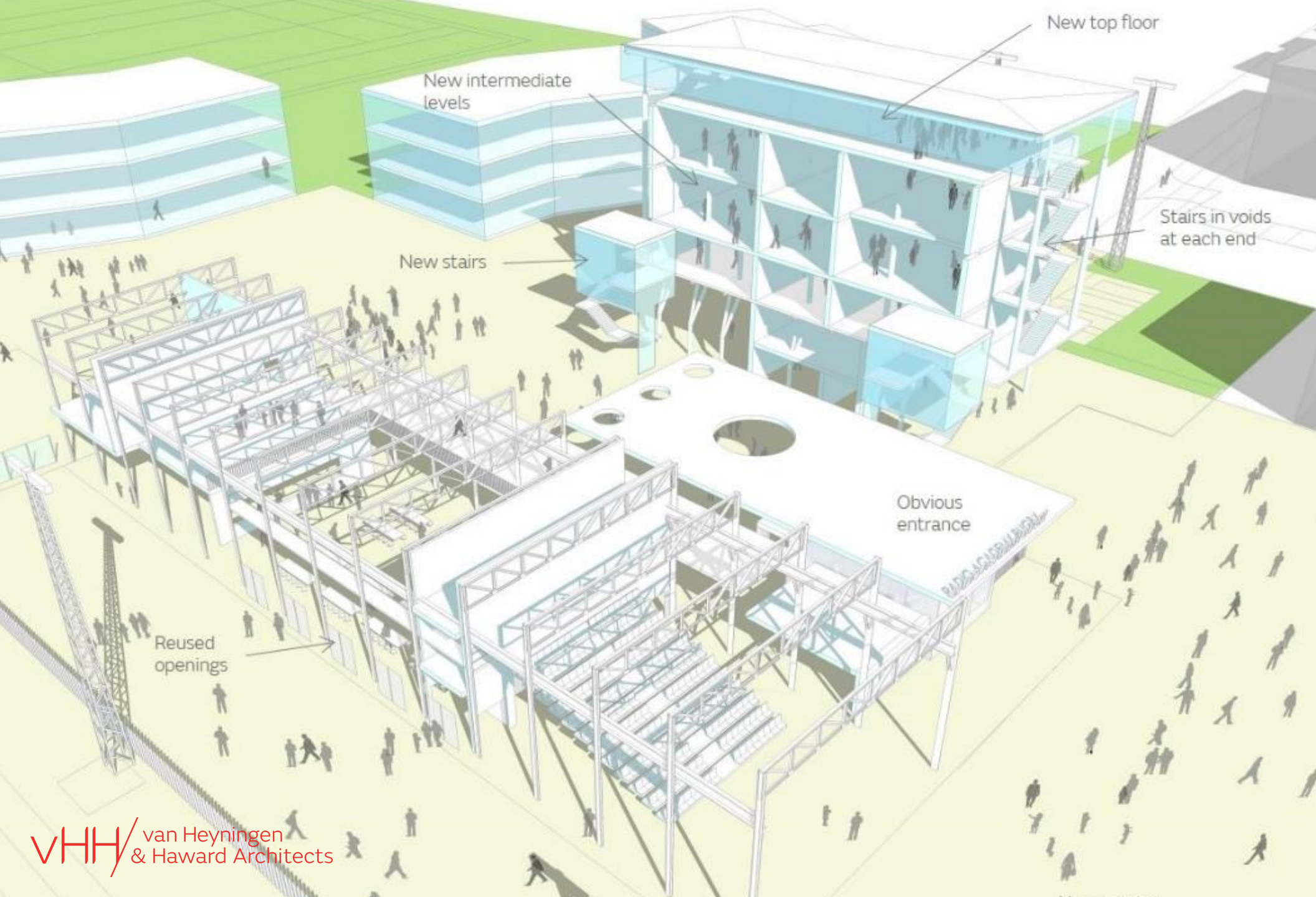


VHH / van Heyningen
& Haward Architects





Health and well-being



Resource efficiency



Whole life carbon



Ethics and transparency



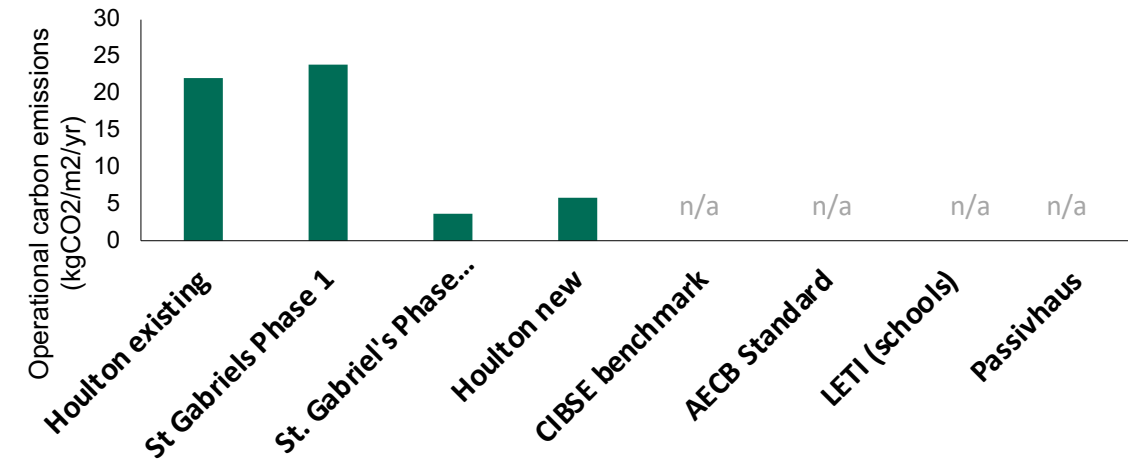
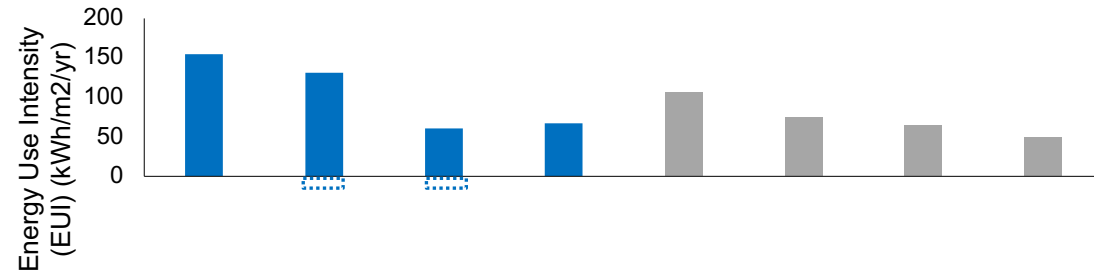
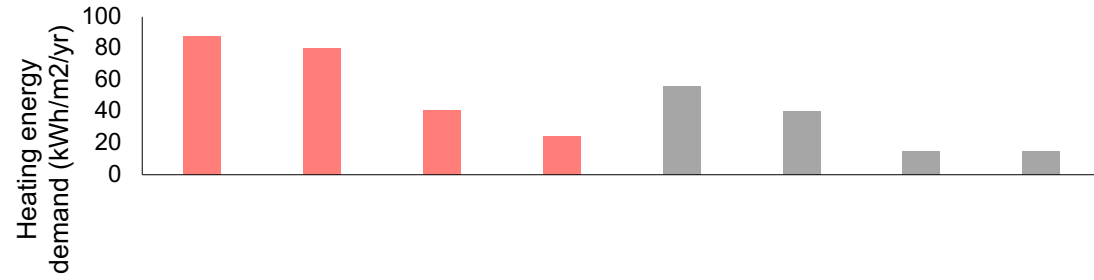
Technical performance



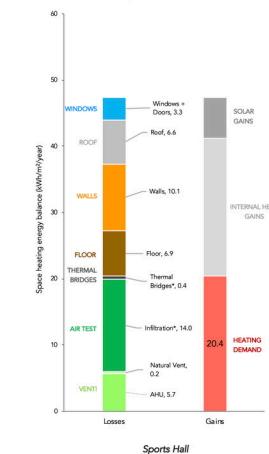
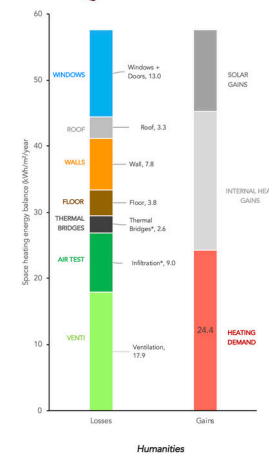
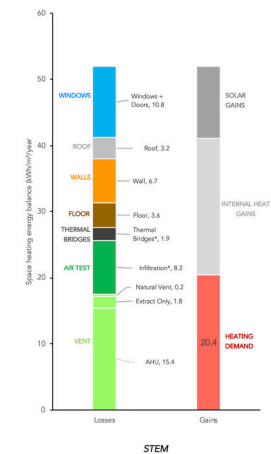
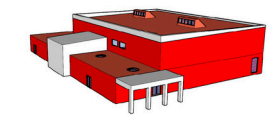
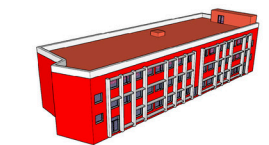
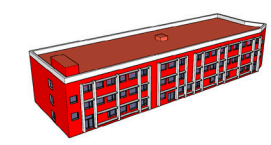
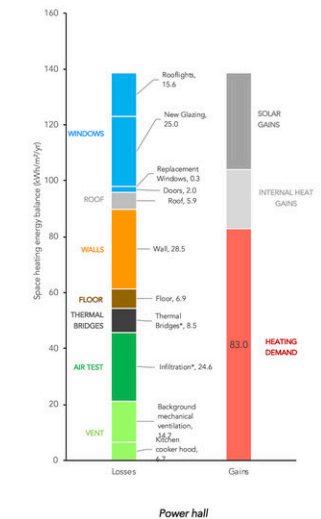
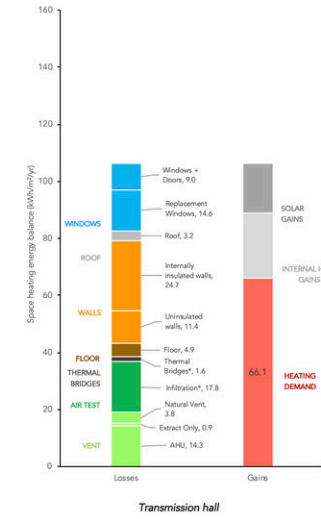
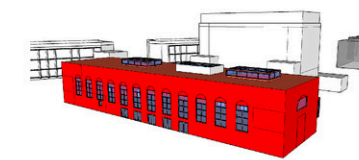
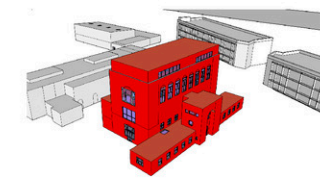
Social value



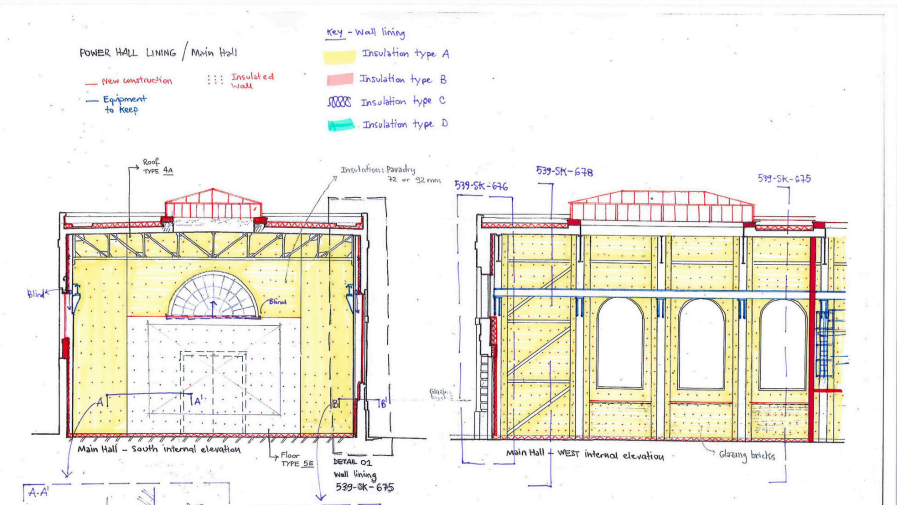
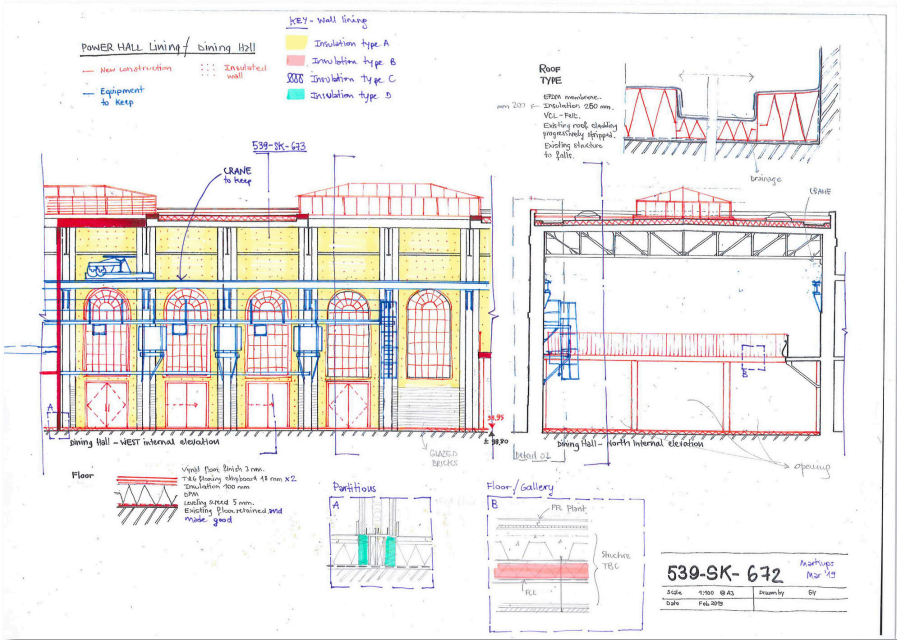
Fabric First Approach & Operational Carbon

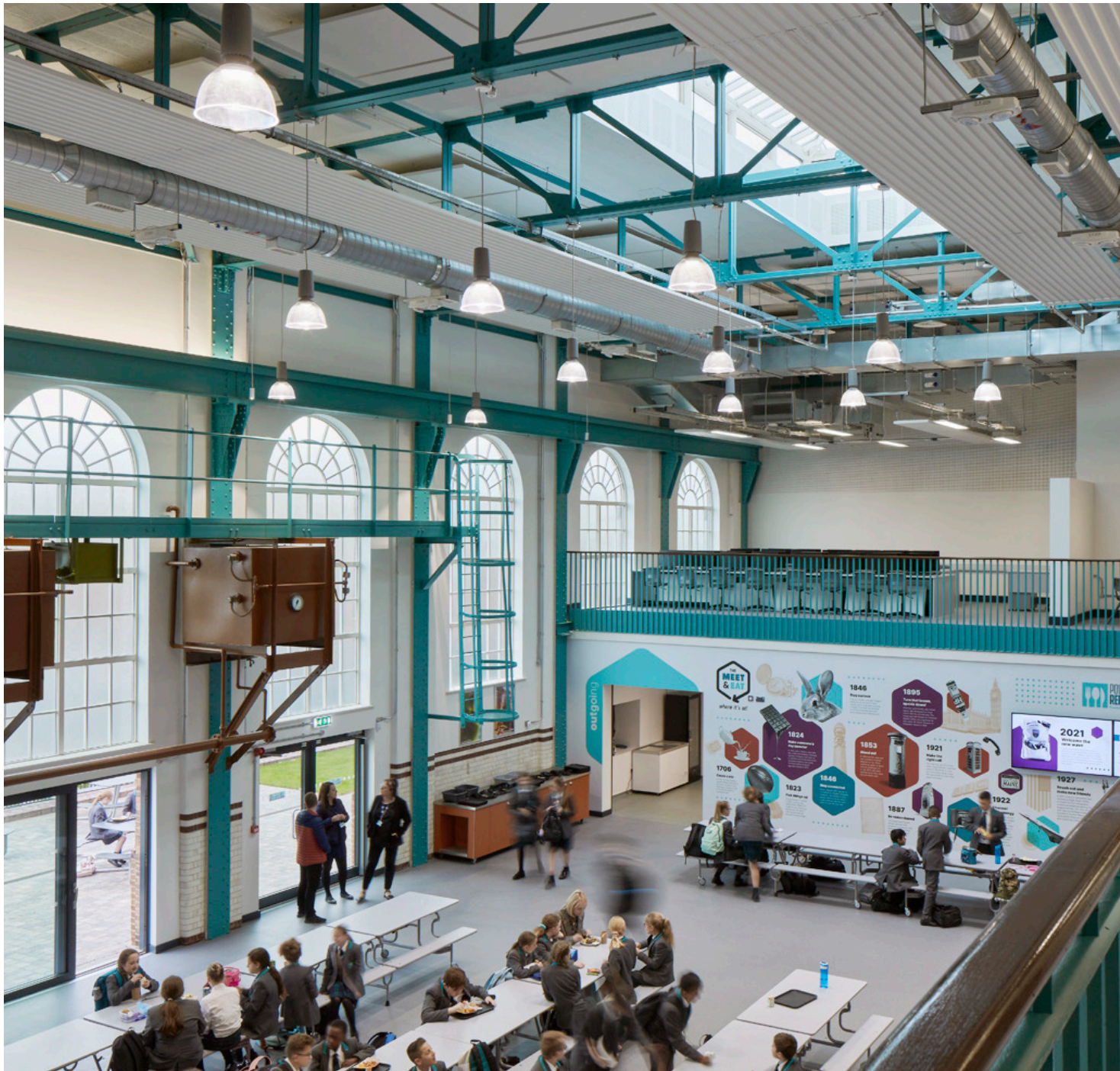


*Based on measured data.
Carbon factors projected average for next 30 years: electricity (0.061kgCO₂/kWh)



Internal Wall Insulation





Follow link to see more onsite photos of Houlton School