



EDWARD
BULMER

NATURAL PAINT

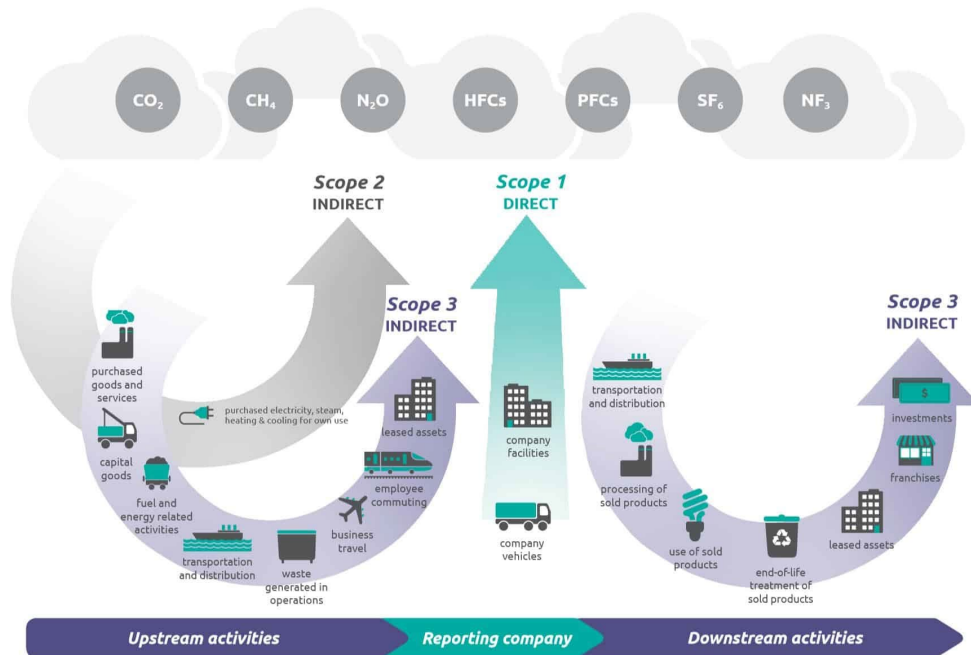
Measuring your Impact: Carbon Reporting



Audit Explained

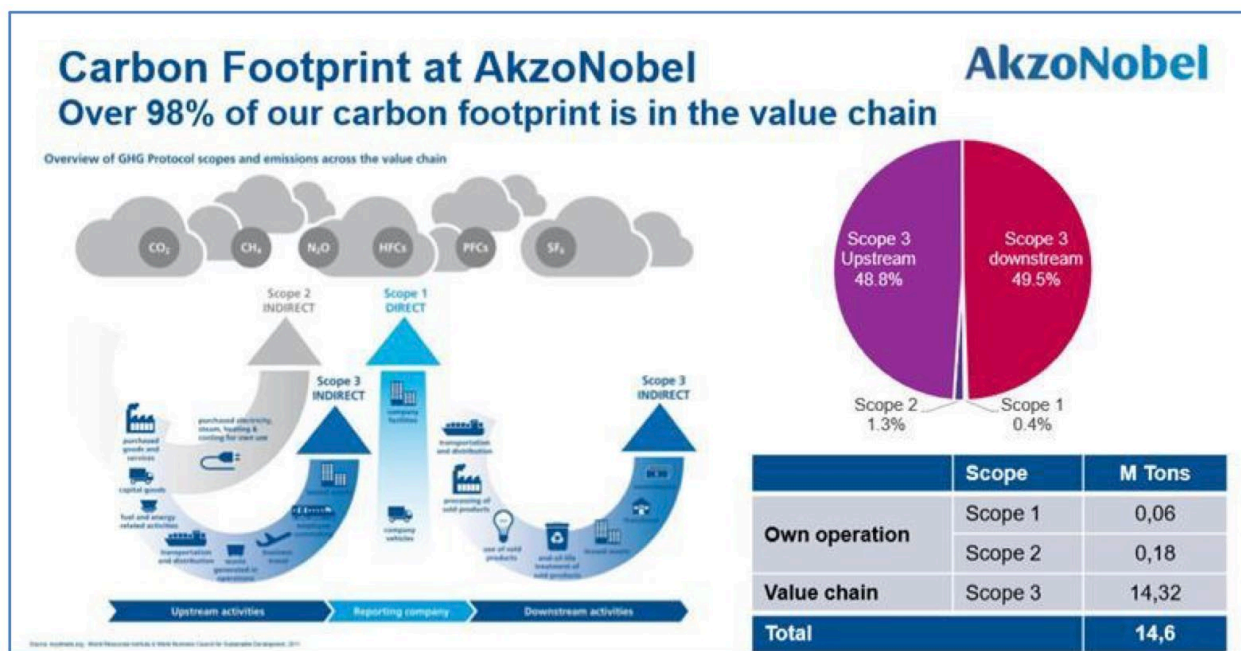
Scope 1 and **Scope 2** - direct emissions from controlled operations and indirect emissions from purchased energy. Most companies will look at carbon emissions termed Scope 1 & 2.

Scope 3 emissions refer to all other indirect emissions from the activities of a company. So that means supply partners, fulfilment partners, logistics carriers...things where companies might have influence, but not direct control.



Scope 1	Scope 2	Scope 3
Purchased Energy	Indirect emissions from electricity	Distribution, purchased goods and services,

Akzo Nobel



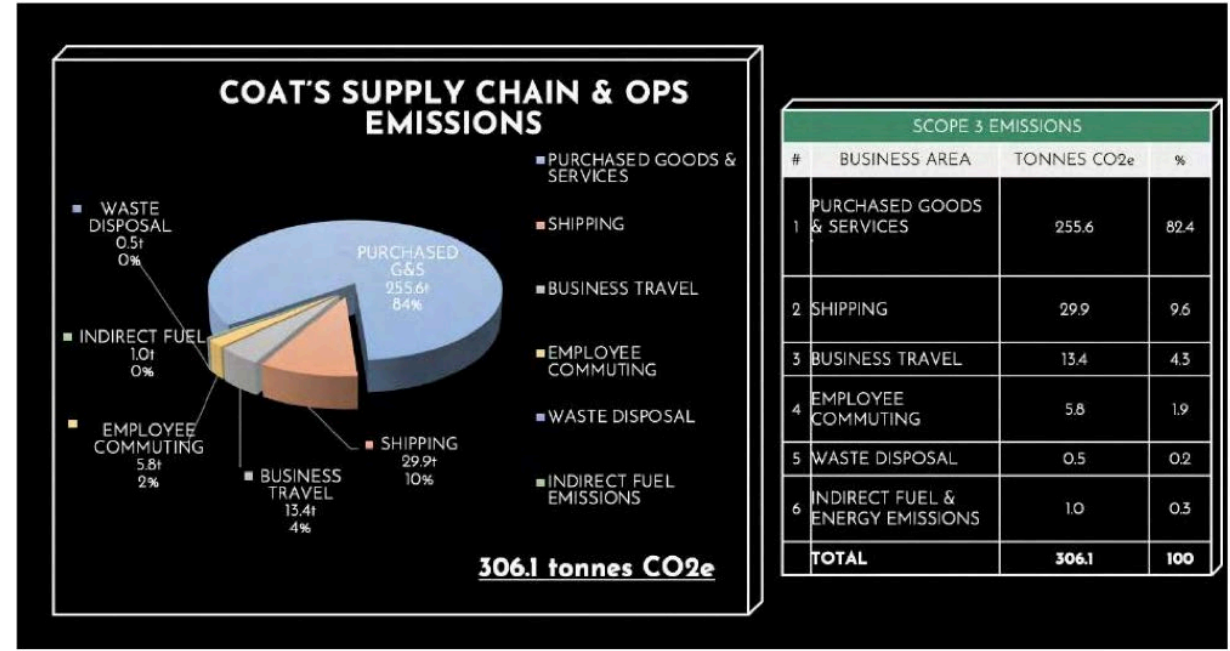
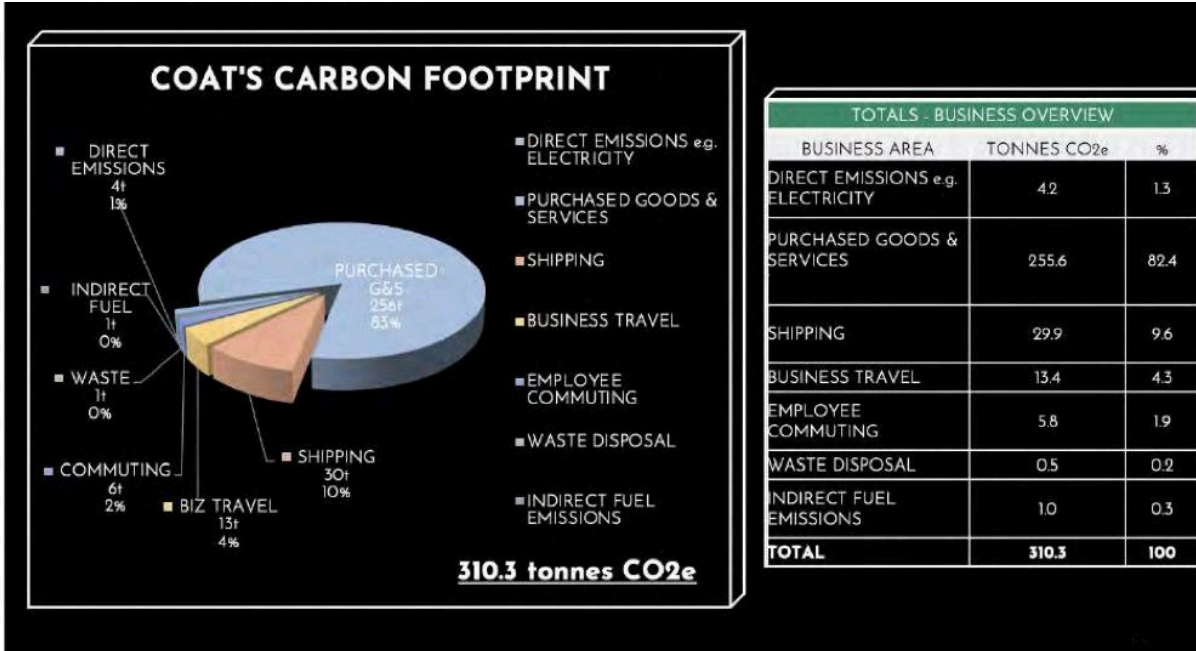
Current Year: 2020	
Additional Details - NA	
Emissions:	TOTAL (tCO2e)
Scope 1	57.16 kilotons or 0.057 million tons
Scope 2	168.2 kilotons or 0.168 million tons
Scope 3 (include sources)	5.9 million tons (Upstream - Category 1: purchased goods and services) 6.7 million tons (Downstream - Category 10: processing of sold products; category 11: use of sold products; category 12: end-of-life treatment of sold products; VOC.) Total Scope 3 = 12.6 million tons
Total Emissions	12.8 million tons

Emissions / Carbon Footprint are measured from cradle-to-grave based on the international Greenhouse Gas (GHG) Protocol and Lifecycle Assessment ISO 14040-44.

Revenue = £7.2 billion

Emissions = 12.8 million tonnes

COAT Paint



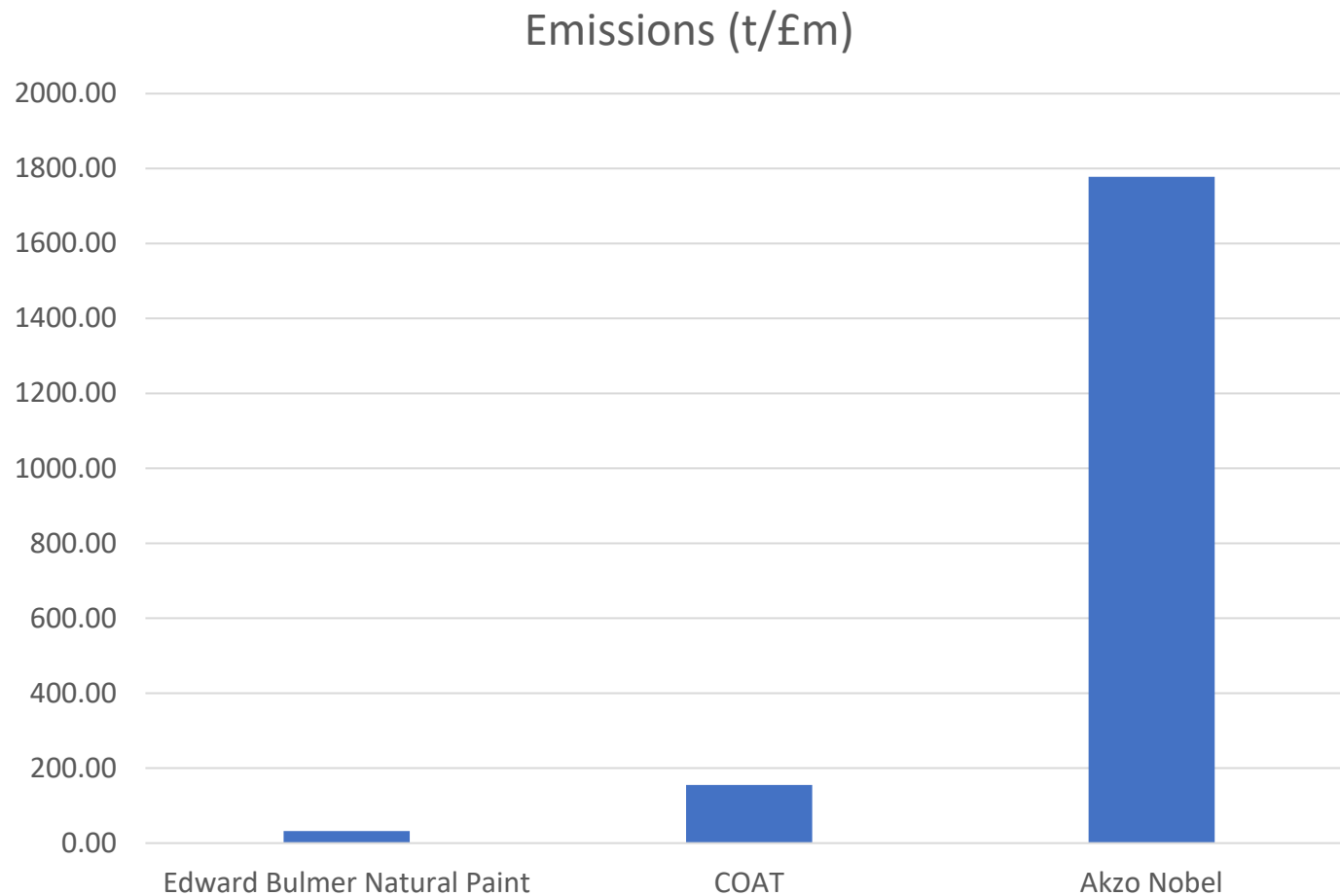
Grand Total = 310.3 tonnes of CO₂e

The majority of COAT'S emissions are Scope 3 as they sell predominantly online. Purchased Goods and Services (PG&S) makes up 82.4% which includes production of the paint.

'PG&S, by far the biggest source of COAT's emissions comes from base paint and colourant, as well as the factory production and packing process.'

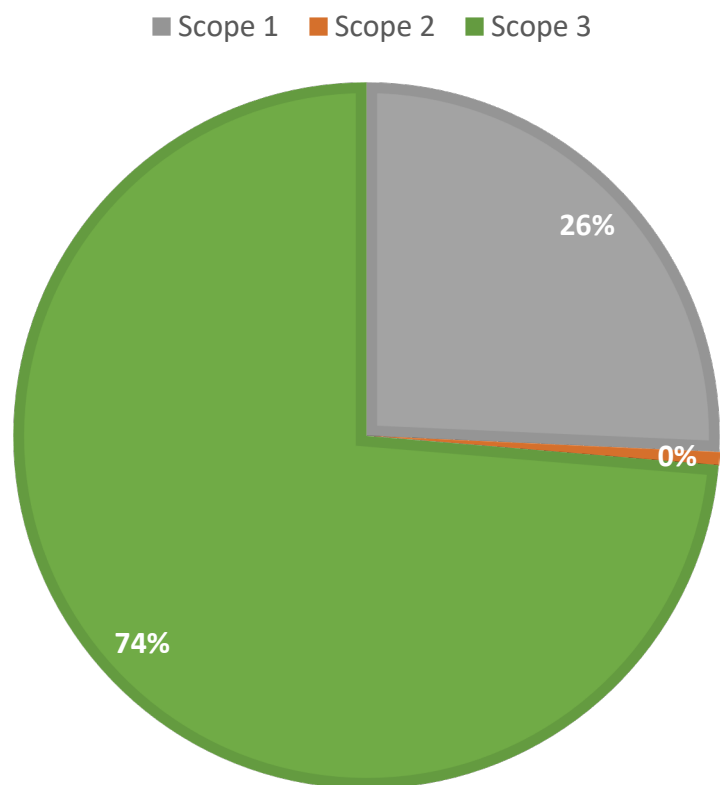
Comparing carbon emissions

	Emissions (t)	Emissions (t/£m)
Edward Bulmer Natural Paint	64.148	32.07
COAT	310	155.00
Akzo Nobel	12800000	1777.78



Edward Bulmer Natural Paint emissions

ORGANISATION EMISSIONS (TCO2E) 2021



Grand Total = 64.148 tonnes CO₂e

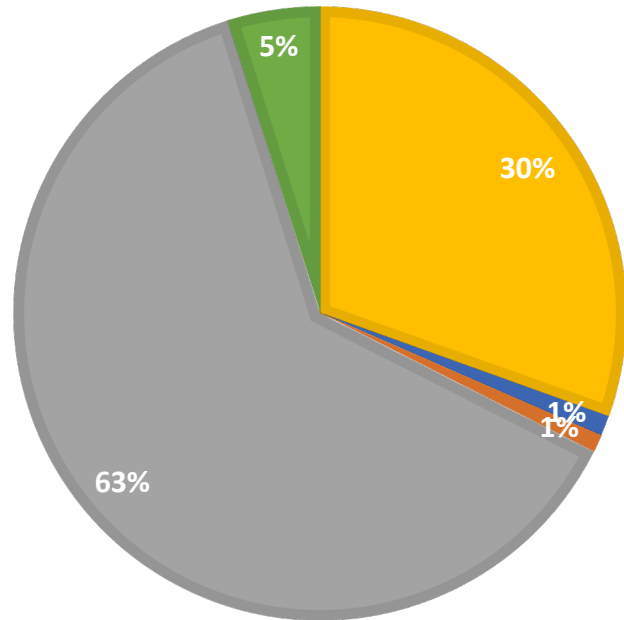
Scope	Organisation Emissions (tCO ₂ e)	tCO ₂ e per million £
Scope 1	16.491	9.701
Scope 2	0.391	0.230
Scope 3	47.266	27.804
All Scopes	64.148	37.734

* assuming carbon neutral production from AURO

Distribution

ALL SHIPMENTS

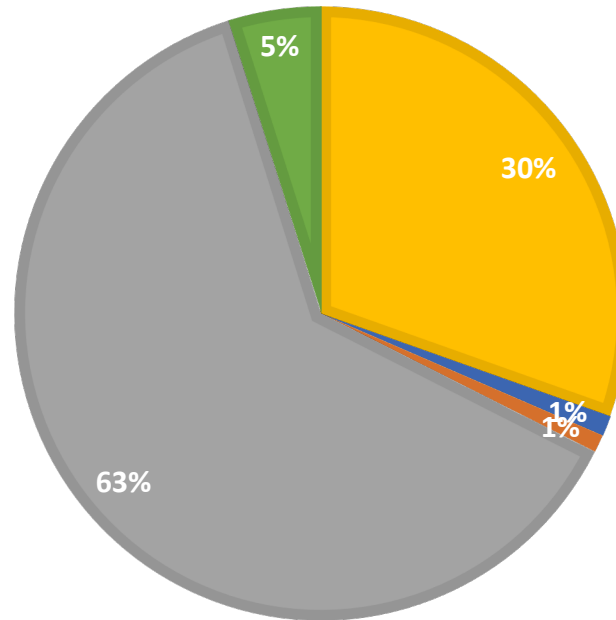
- Paint Shipment from Germany
- A5 Distribution
- Colour Chart Distribution
- Paint Distribution
- Sample Pot Distribution



63% of transport emissions from from paint distribution from EBNP HQ.
30% comes from shipment of base paint from Germany

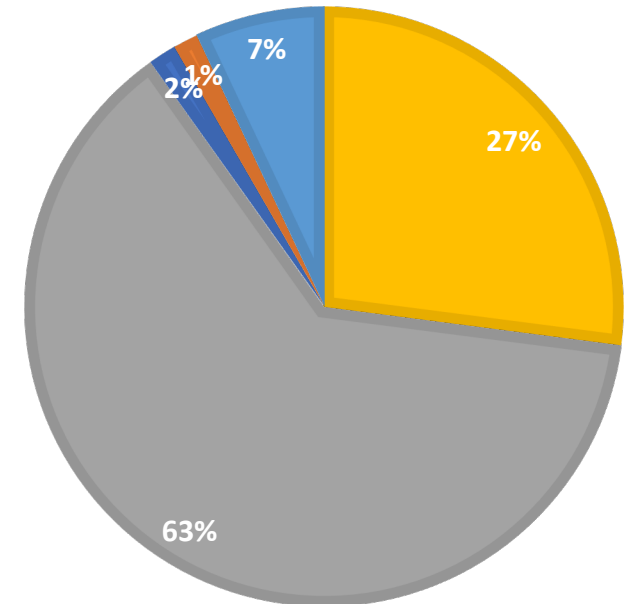
ALL SHIPMENTS

- Paint Shipment from Germany
- A5 Distribution
- Colour Chart Distribution
- Paint Distribution
- Sample Pot Distribution



BREAK DOWN OF DISTRIBUTION

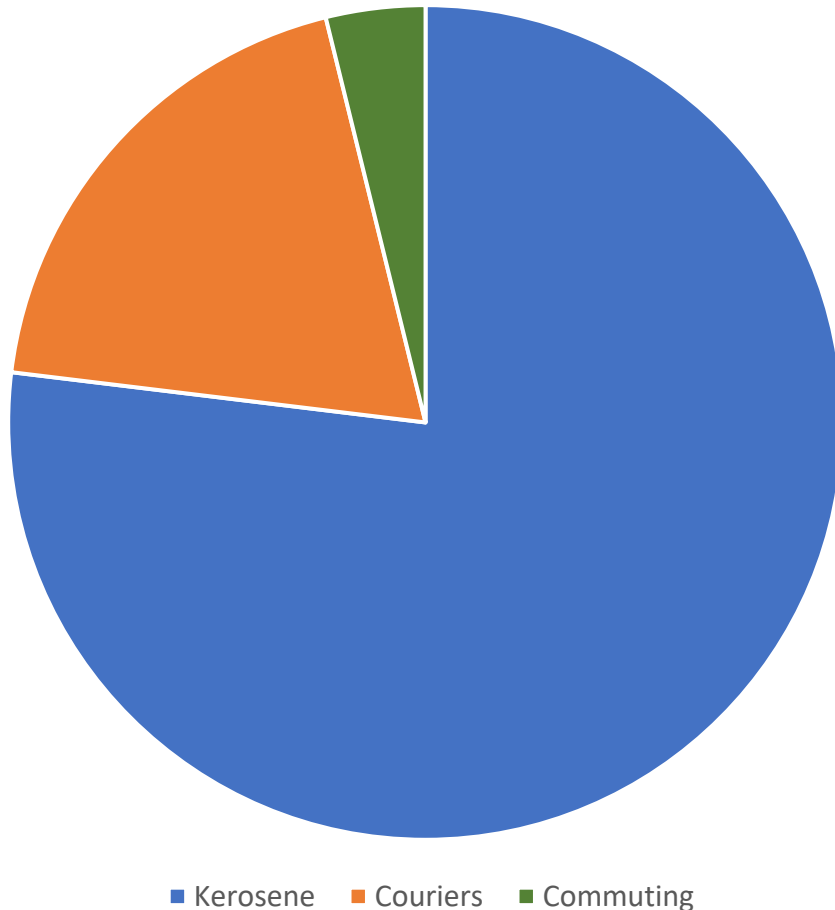
- London Paint Distribution
- Rest of Country Paint Distribution
- A5 Distribution
- Colour Chart Distribution



Operating out of London shop would reduce the emissions by **4.5 tonnes CO₂e**

Reducing our carbon footprint

YEAR 1/2



CO2e EMISSIONS SAVING

KEROSENE HEATING OIL 20 tonnes

Replace oil fired boilers in Office and Court of Noke with Heat Pumps

COURIERS 5 tonnes

Using an element of electric or pedal powered delivery

COMMUTING 1 tonne

Instal electric charger and encourage staff to switch to electric vehicles